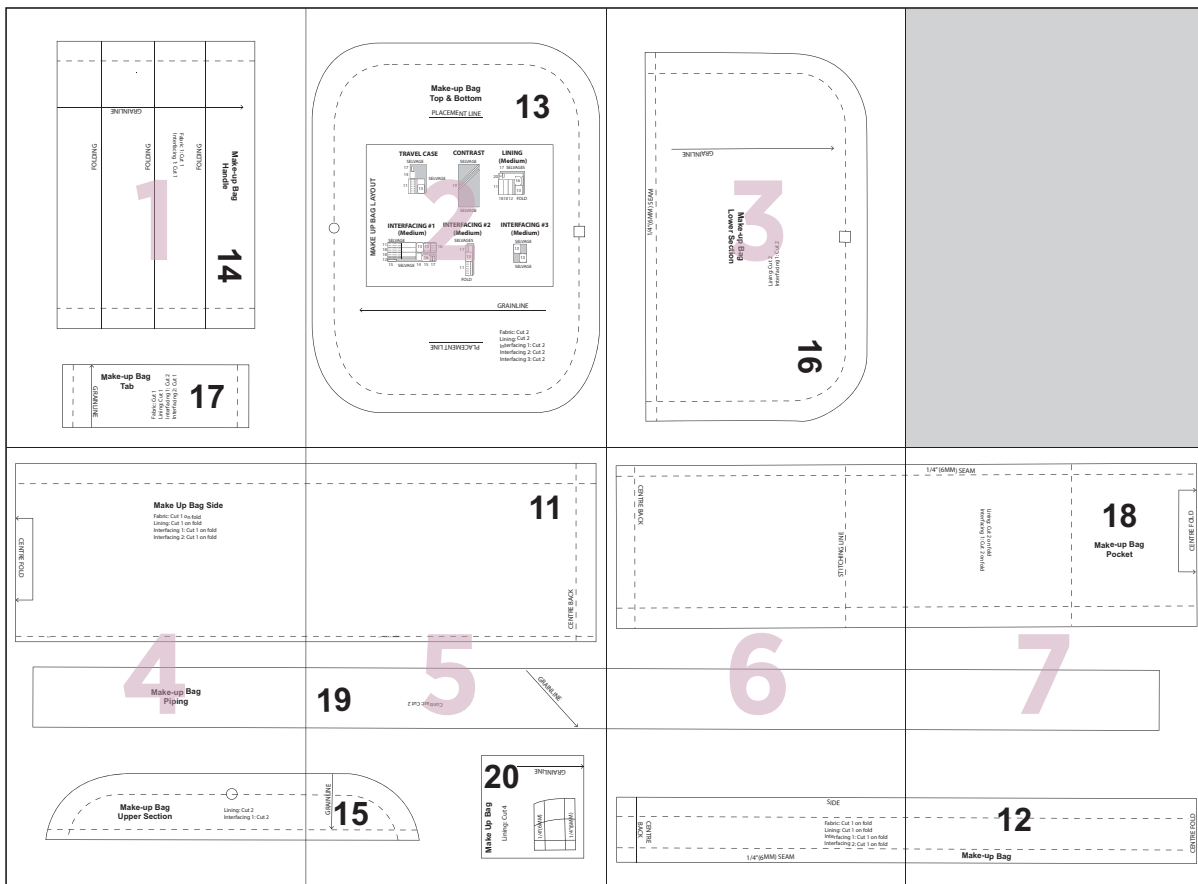
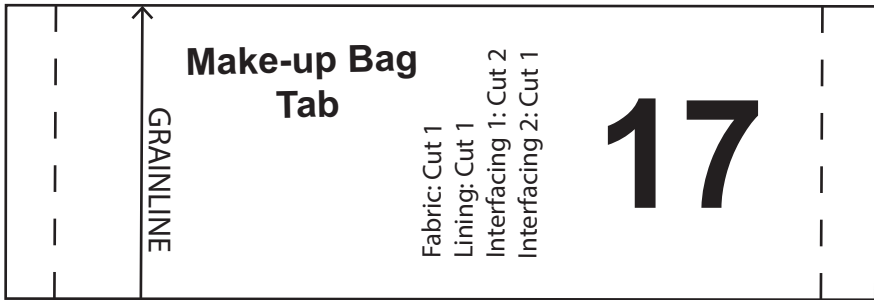
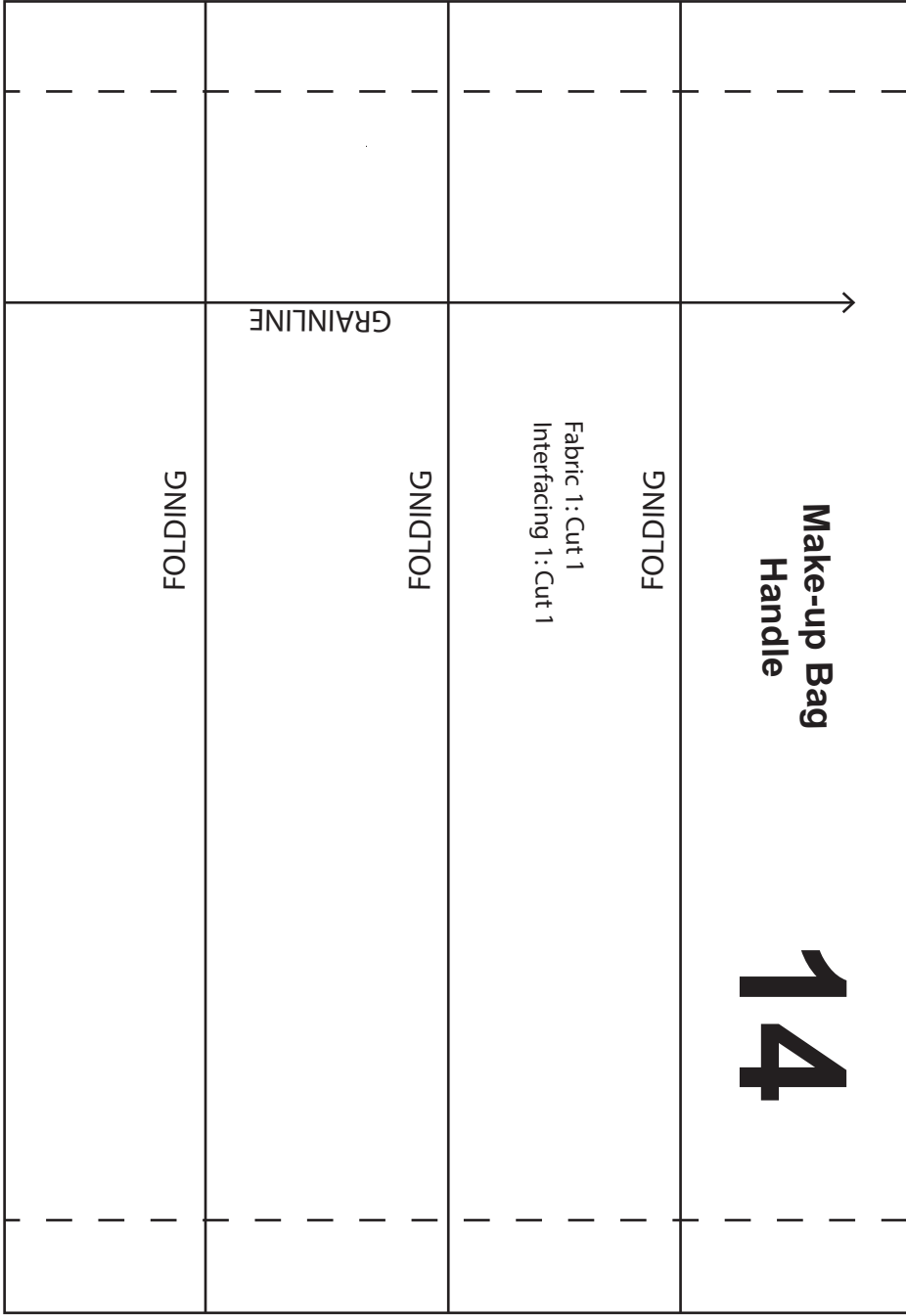


# MAKE-UP BAG





**1**

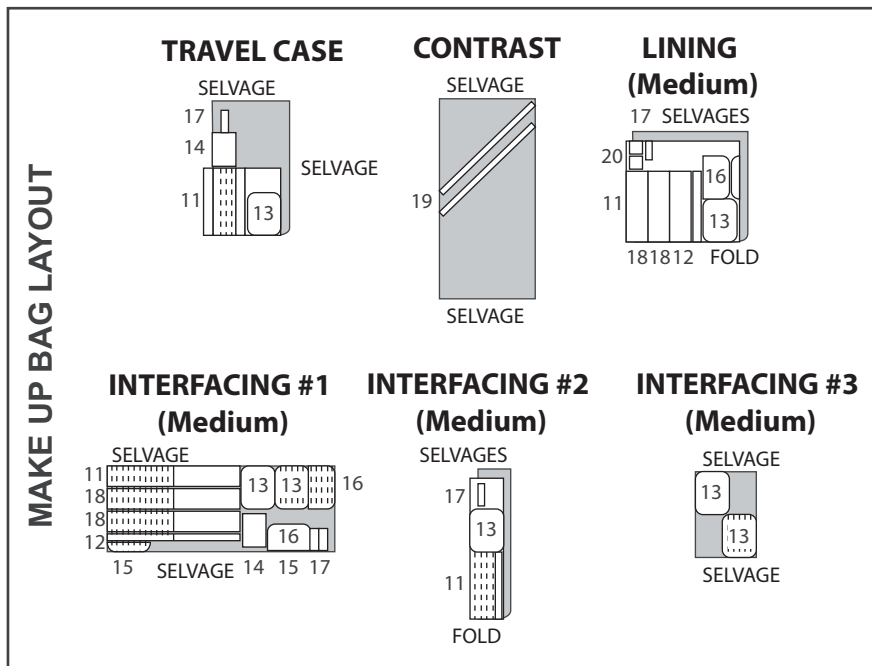




# Make-up Bag Top & Bottom

# 13

PLACEMENT LINE

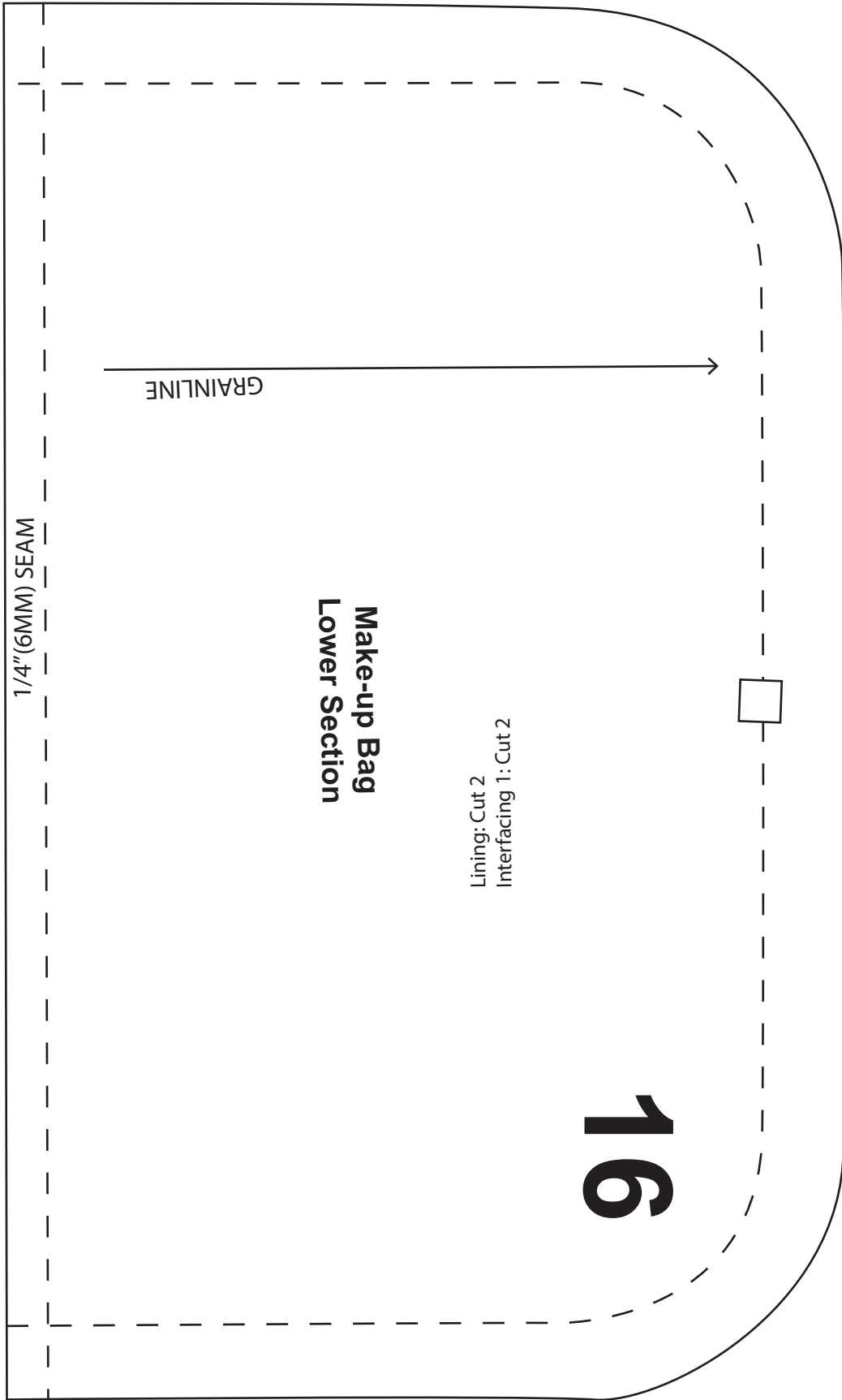


← GRAINLINE

PLACEMENT LINE

- Fabric: Cut 2
- Lining: Cut 2
- Interfacing 1: Cut 2
- Interfacing 2: Cut 2
- Interfacing 3: Cut 2

3



Lining: Cut 2  
Interfacing 1: Cut 2



4



### Make Up Bag Side

Fabric: Cut 1 on fold  
Lining: Cut 1 on fold  
Interfacing 1: Cut 1 on fold  
Interfacing 2: Cut 1 on fold



### Make-up Bag Piping

### Make-up Bag Upper Section

Lining: Cut 2  
Interfacing 1: Cut 2

5

11

CENTRE BACK



19

Contrast: Cut 2

GRAINLINE

15

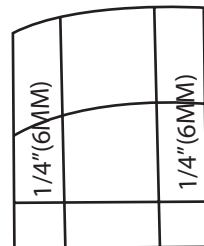
GRAINLINE

20

GRAINLINE

Make Up Bag

Lining: Cut 4



6

CENTRE BACK

STITCHING LINE



SIDE

CENTRE  
BACK

Fabric: Cut 1 on fold  
Lining: Cut 1 on fold  
Interfacing 1: Cut 1 on fold  
Interfacing 2: Cut 1 on fold

1/4"(6MM) SEAM

7

1/4" (6MM) SEAM

Lining: Cut 2 on fold  
Interfacing 1: Cut 2 on fold

18

Make-up Bag  
Pocket

CENTRE FOLD



12

Make-up Bag

CENTRE FOLD