

Templates for Easy Baby Dress Bodice.

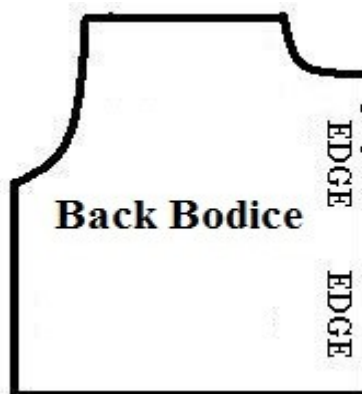
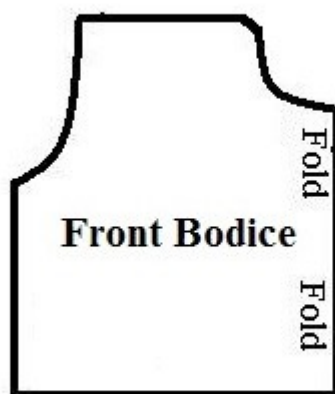
Instructions to check if your templates have printed out at the right size.

If the square given on the front pattern piece measures 2X2 inches after you print it out, all your templates will be of the right size.

Instructions for Cutting the Templates

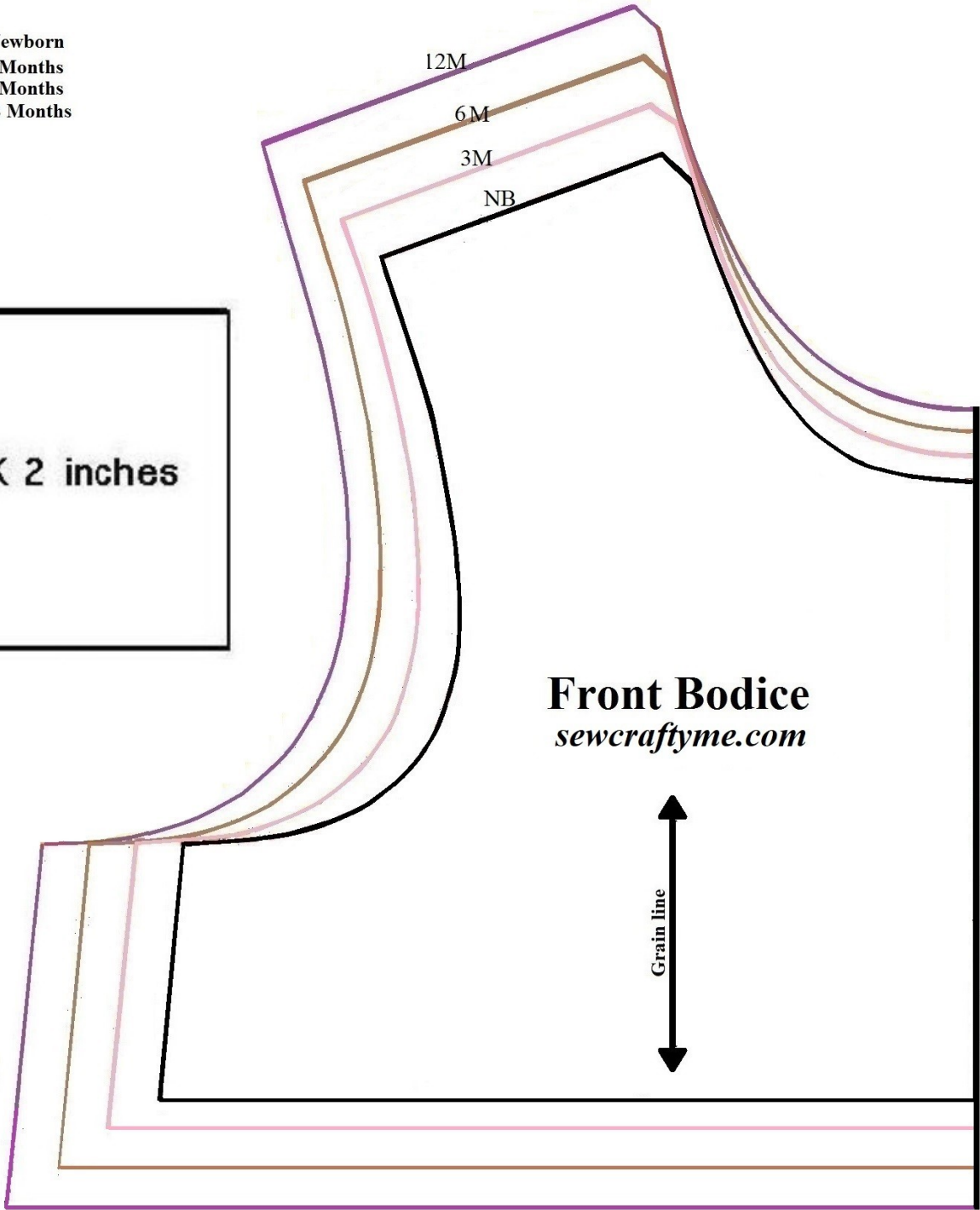
* Cut along the black line marked "FOLD" for the front bodice and the black line marked "EDGE" for the back bodice and also along the colored line marked for your age.

*Your front and back bodice will look like the pictures below after you cut it out.

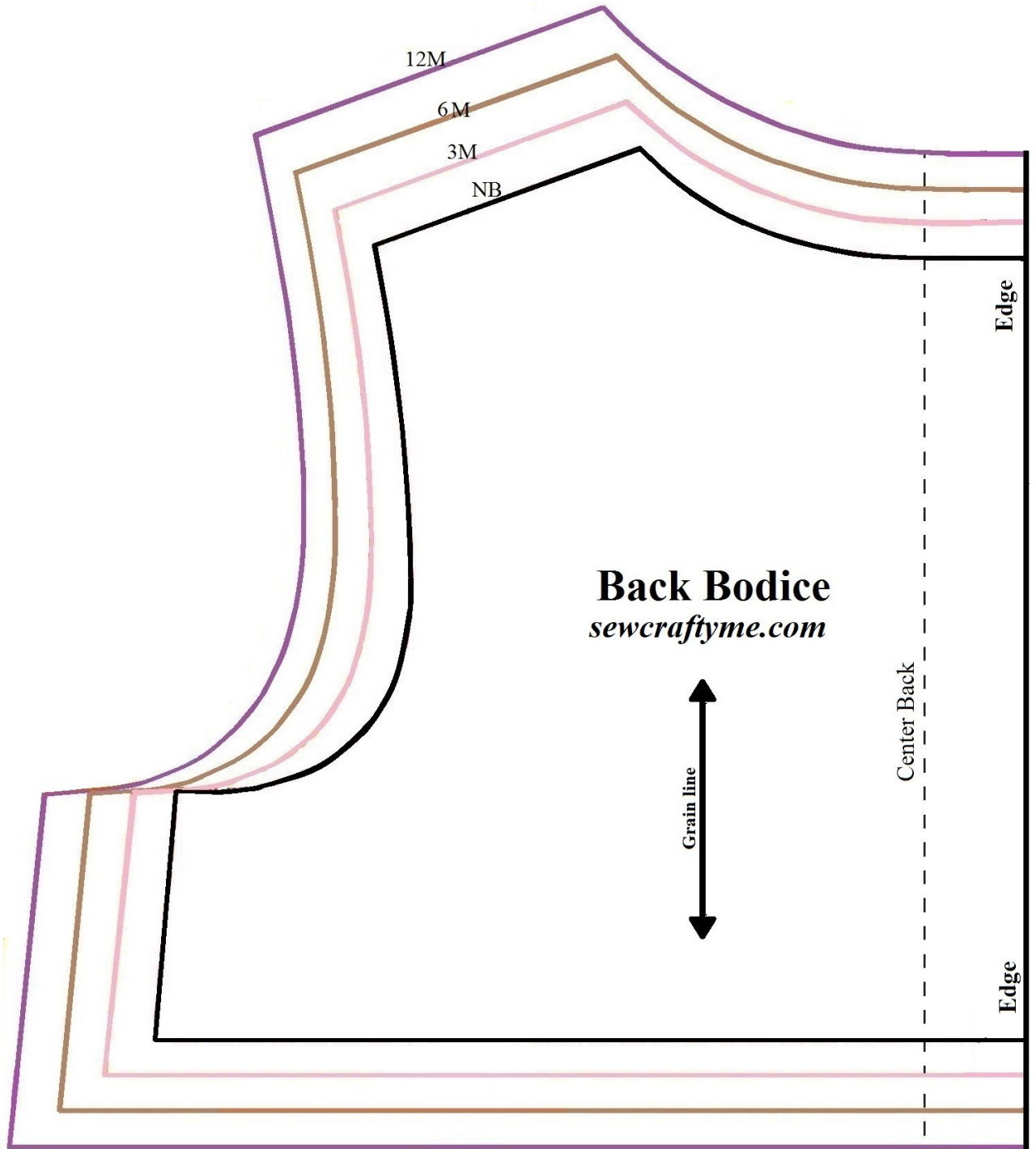


- Newborn
- 3 Months
- 6 Months
- 12 Months

2 X 2 inches



Front Bodice
sewcraftyme.com



12M

6M

3M

NB

Edge

Back Bodice
sewcraftyme.com

Grain line

Center Back

Edge