

# fanny pack

BACK

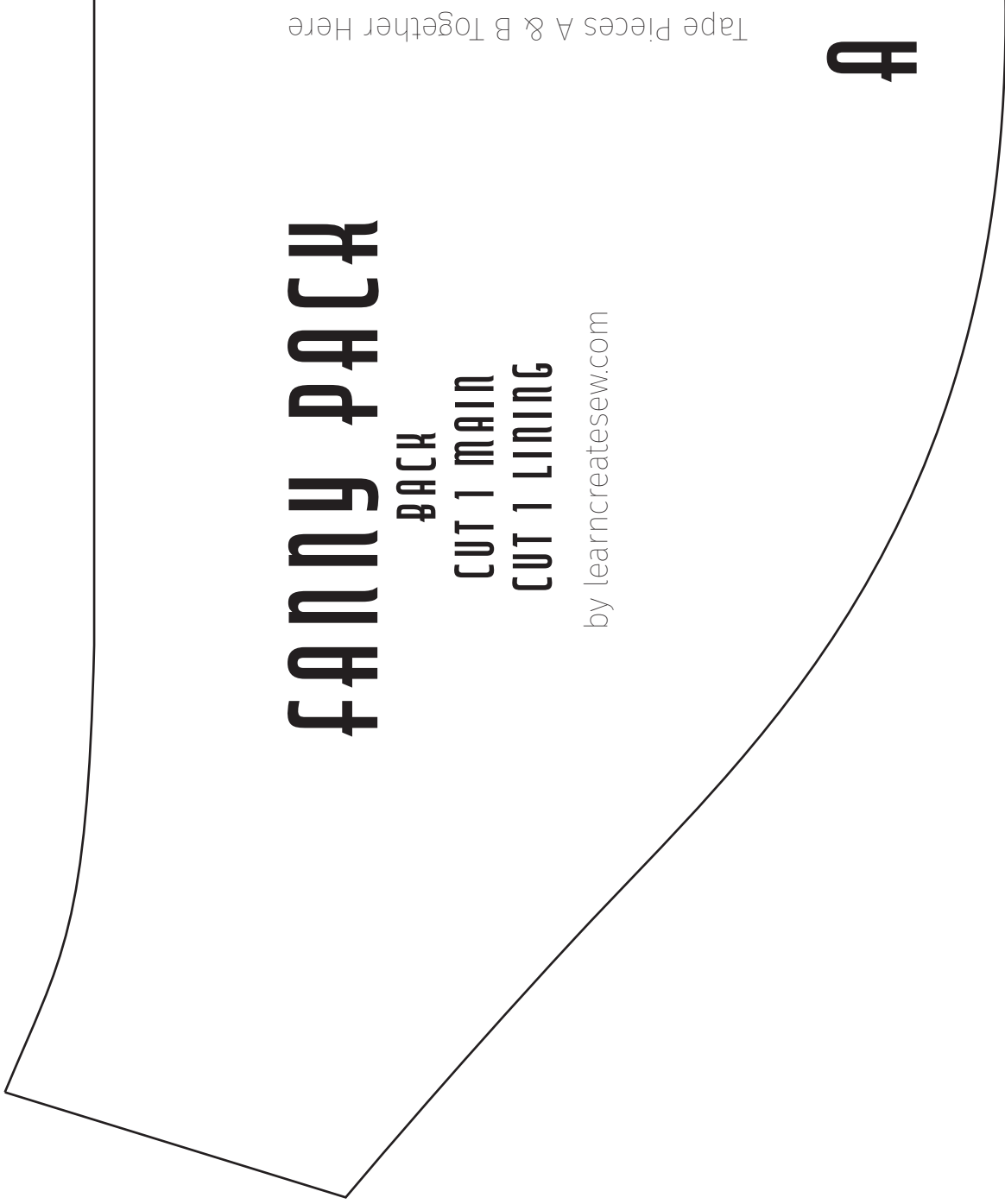
CUT 1 MAIN

CUT 1 LINING

by [learncreatesew.com](http://learncreatesew.com)

A

Tape Pieces A & B Together Here



# fanny pack

BACK

CUT 1 MAIN

CUT 1 LINING

by [learncreatesew.com](http://learncreatesew.com)

Tape Pieces A & B Together Here

**B**

# fanny pack

SIDE

CUT 2 MAIN

CUT 2 LINING

(CUT 1 & 1 REVERSED)

by [learncreatesew.com](http://learncreatesew.com)

# FANNY PACK

FRONT

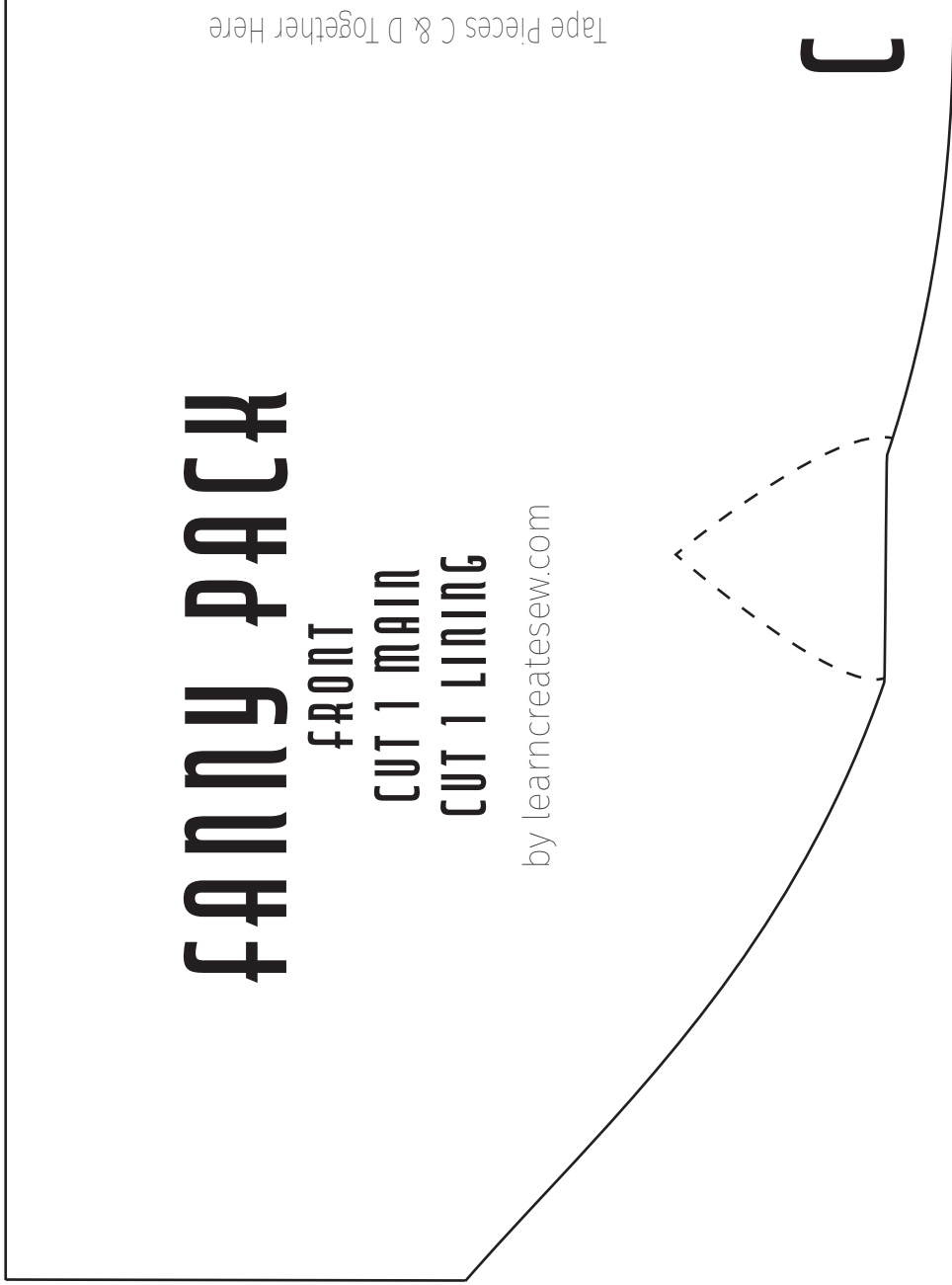
CUT 1 MAIN

CUT 1 LINING

by [learncreatesew.com](http://learncreatesew.com)



Tape Pieces C & D Together Here



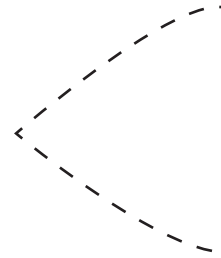
# FANNY PACK

FRONT

CUT 1 MAIN

CUT 1 LINING

by [learncreatesew.com](http://learncreatesew.com)

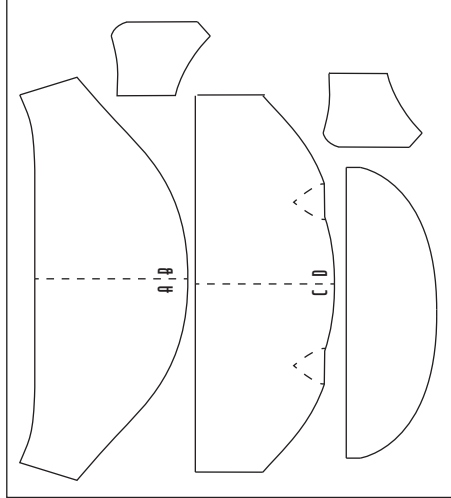


**D**

Tape Pieces C & D Together Here



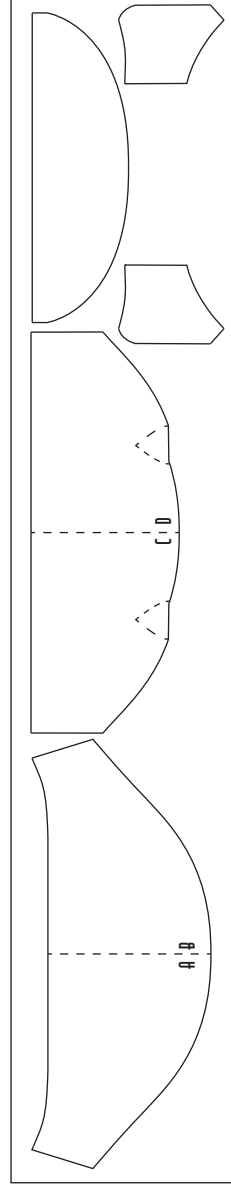
**FAT QUARTER OR INTERFACING**



18 in

16 in

**POSSIBLE CUT LAYOUTS: CUT FROM MAIN FABRIC & LINING**



40 in

7.5 in