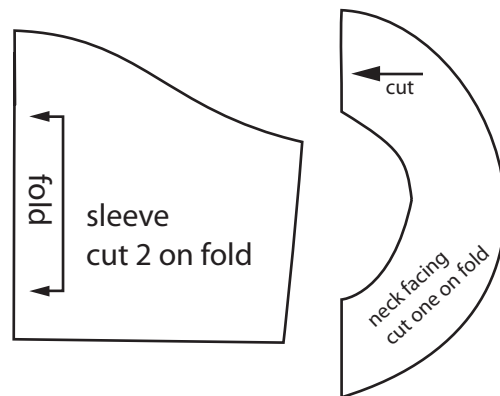


Make sure to print at 100% scale.  
To confirm correct printing size, verify that this picture printed out to be 4" tall.

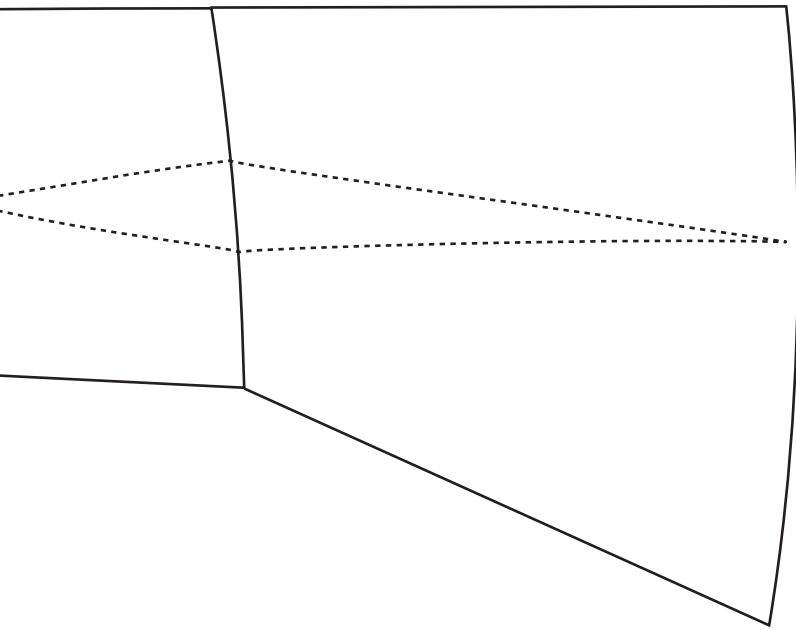


Basic bodice and sleeves  
for 1999 Bellybutton Barbie  
from [www.janelwashere.com](http://www.janelwashere.com)  
copyright 2013



scant 1/4 inch seams allowed  
(if in doubt, use slightly less than 1/4 inch seams)

1. Neck facing to bodice right sides together. You can determine a more round or V-shape neckline by the stitching line. Clip, turn, press and top stitch.
2. Turn up sleeve edges and topstitch then pin and stitch sleeves into armholes. I find hand stitching works best there.
3. Sew front and back darts. It's a good idea to mark the top of the dart and start sewing at the top to make sure both darts are even, because a slight variation is obvious.
4. Side seams and sleeve seams
5. Then add the skirt. The skirt is up to you! (If you are adding a gathered skirt it might be a good idea to make the back darts smaller to compensate for the bulk.)
6. Finally the back snaps or velcro



Here's the skirt extensions to make a Princess Seams dress from this bodice

