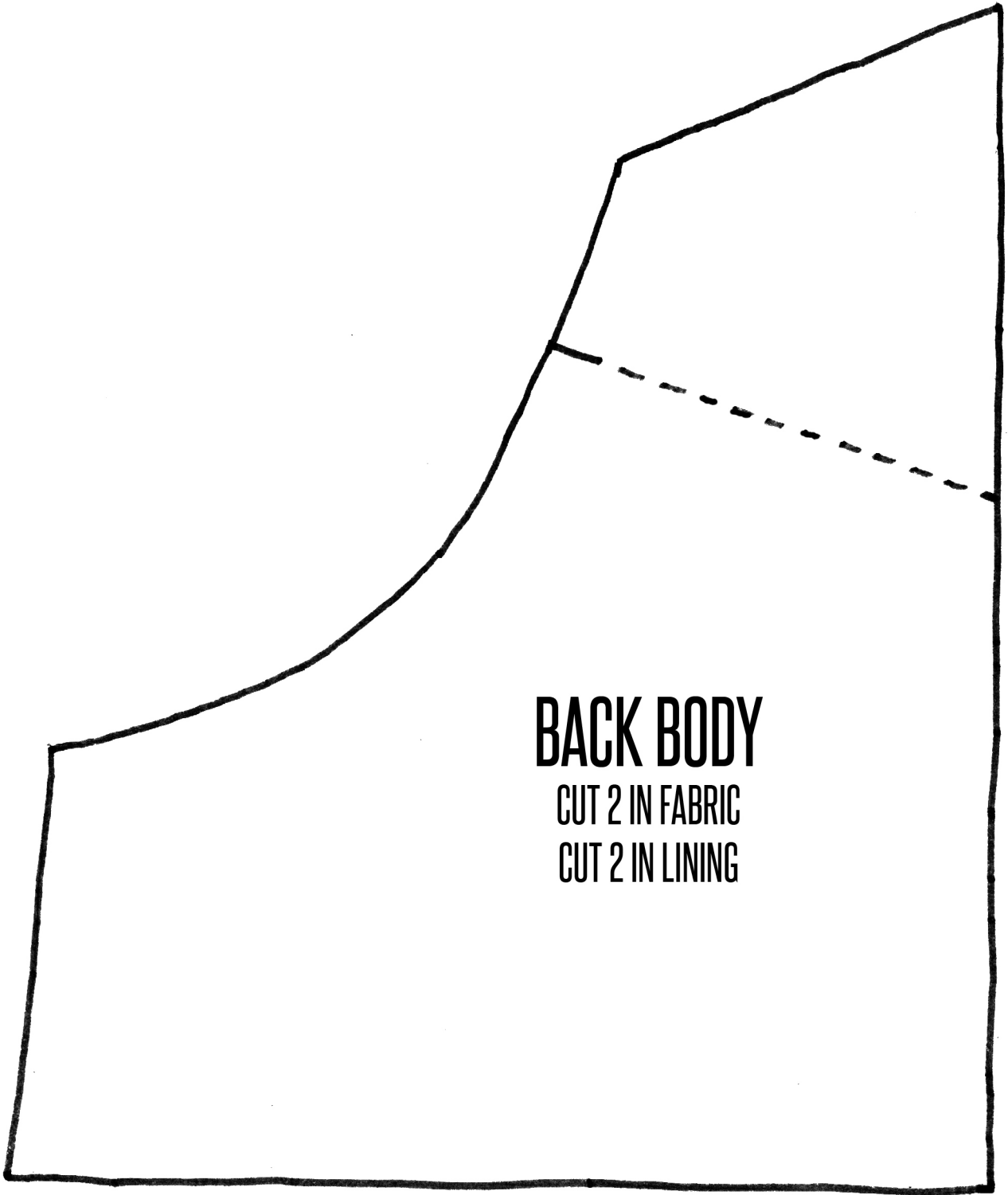


**BODY FRONT**

CUT 1 ON FOLD IN FABRIC

CUT 1 ON FOLD IN LINING

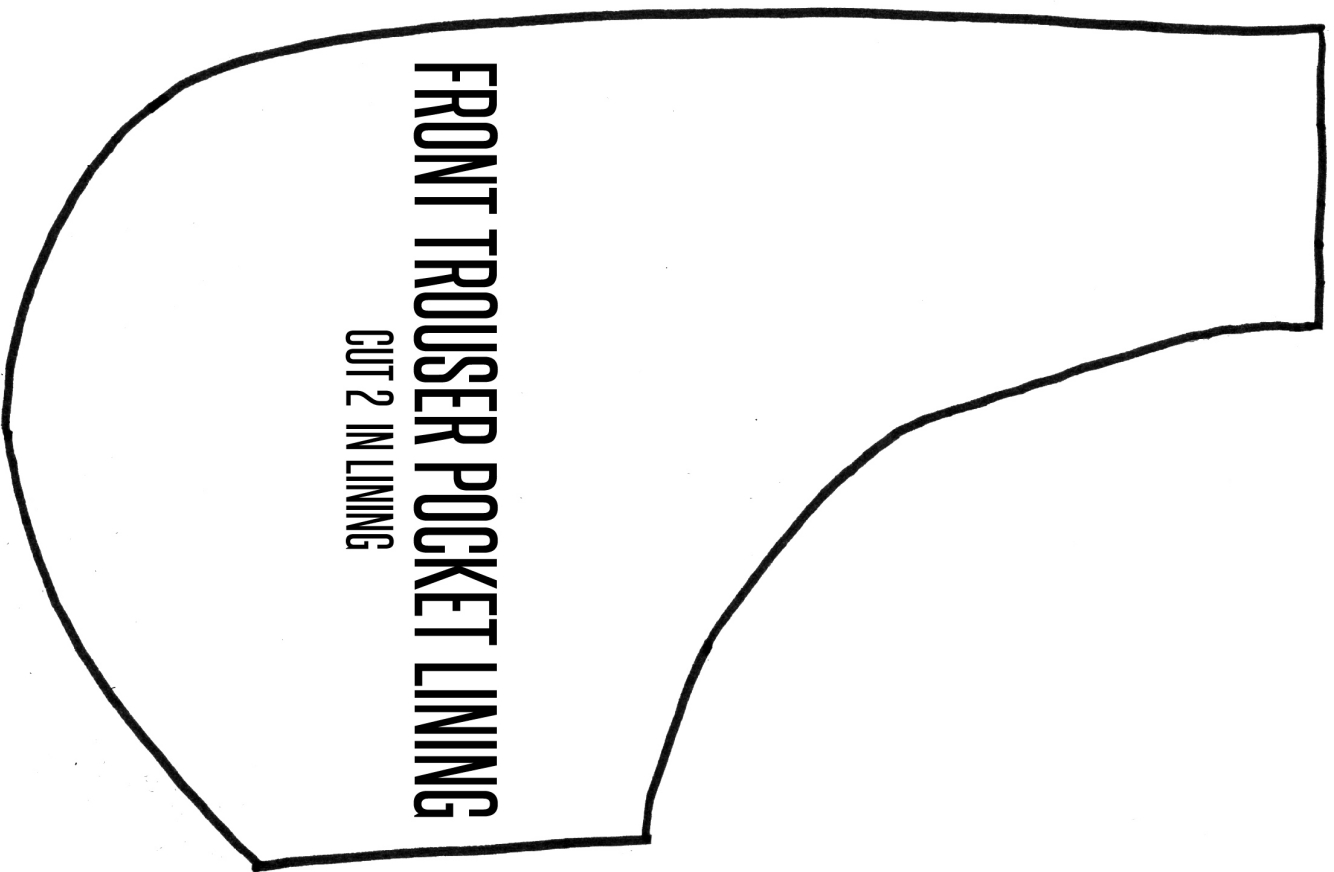
CUT ON FOLD



**BACK BODY**

CUT 2 IN FABRIC

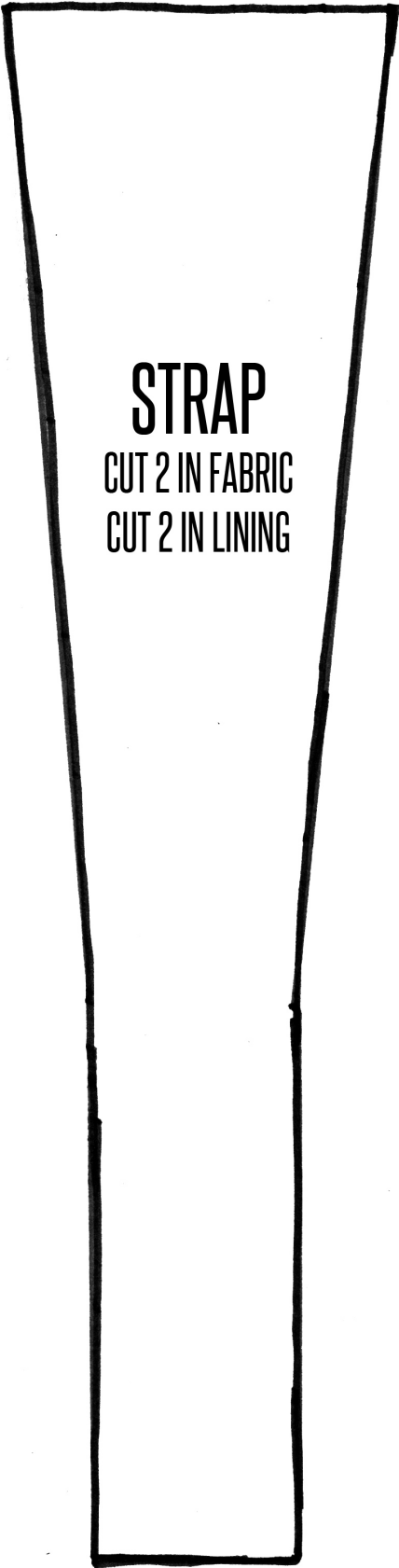
CUT 2 IN LINING



**FRONT TROUSER POCKET LINING**  
CUT 2 IN LINING



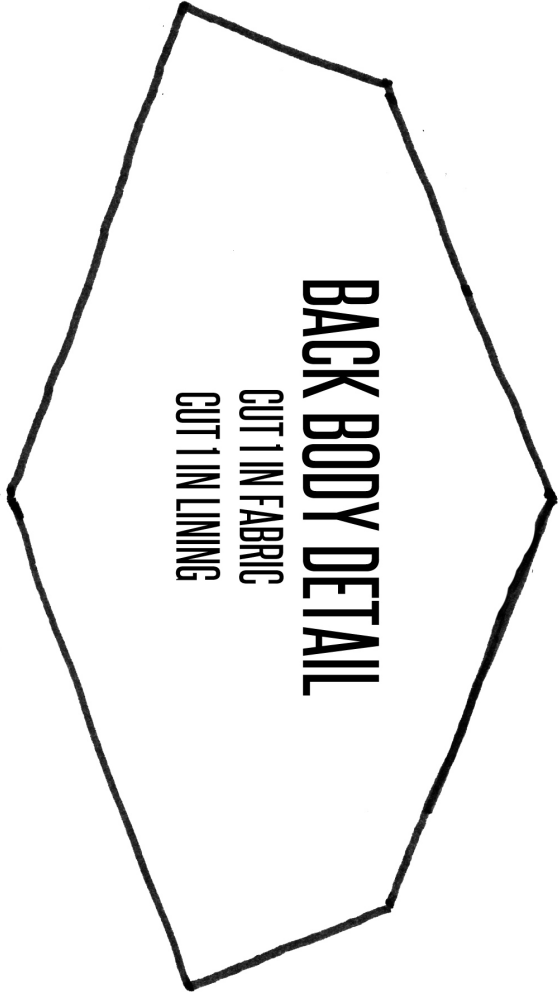
**FRONT TROUSER POCKET**  
CUT 2 IN FABRIC



**STRAP**

CUT 2 IN FABRIC

CUT 2 IN LINING



**BACK BODY DETAIL**

CUT 1 IN FABRIC

CUT 1 IN LINING

A hand-drawn pattern for a back trouser pocket. It is a rectangular shape with a rounded top-left corner and a small notch at the bottom-left corner. The text is centered within the shape.

**BACK TROUSER POCKET**

CUT 2 IN FABRIC

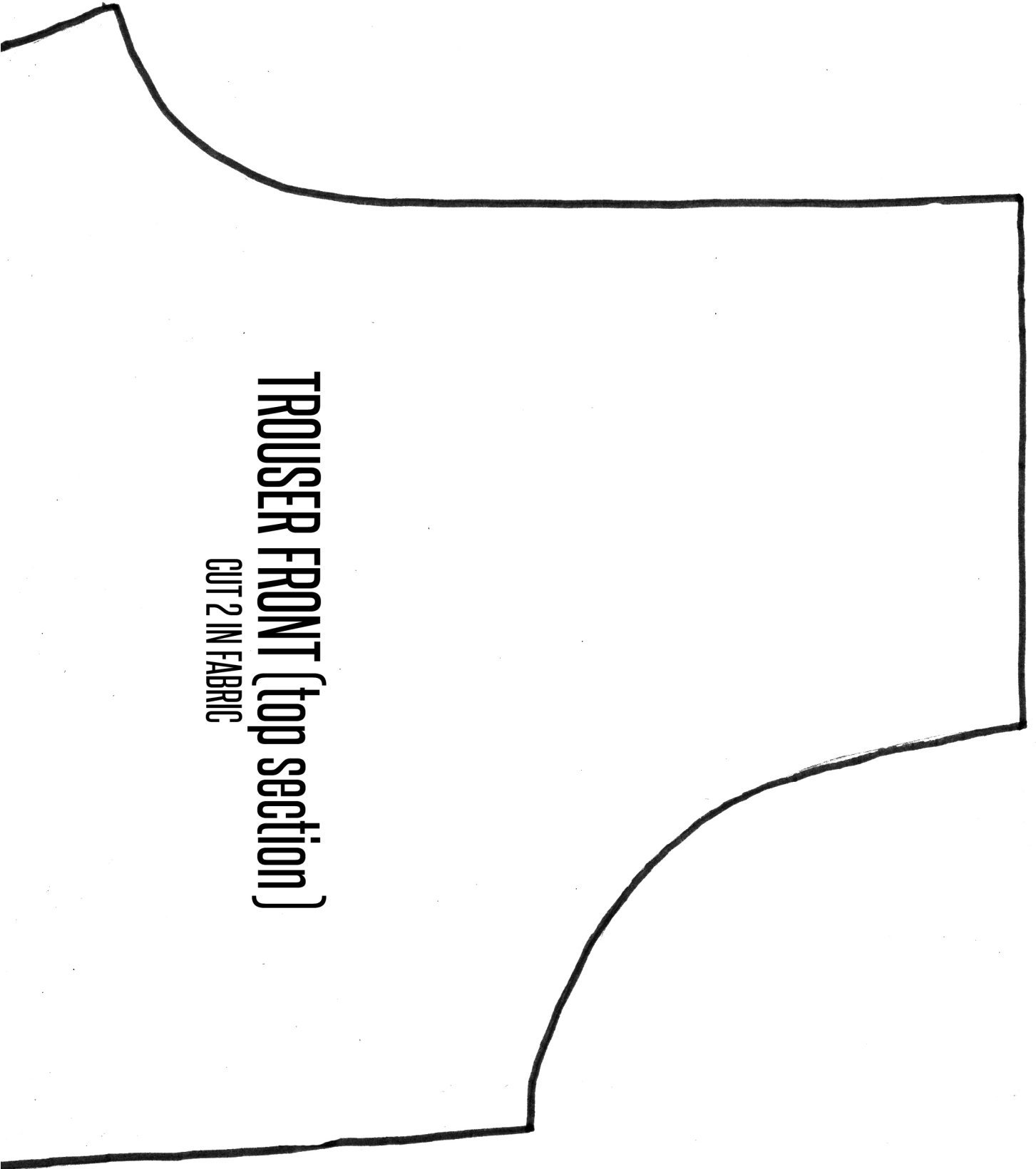
CUT 2 IN LINING

A hand-drawn pattern for a front body pocket. It is a rectangular shape with a rounded top-left corner and a small notch at the bottom-left corner. The text is centered within the shape.

**FRONT BODY POCKET**

CUT 1 IN FABRIC

CUT 1 IN LINING



**TROUSER FRONT (top section)**

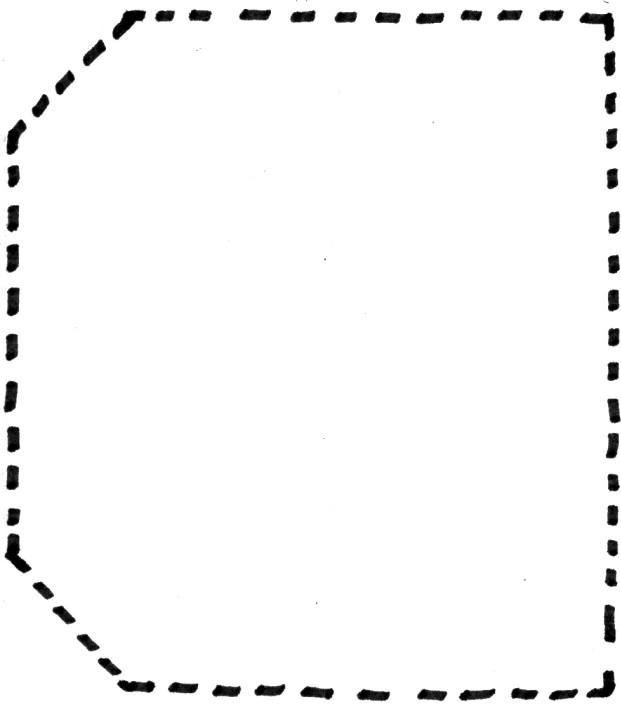
**CUT 2 IN FABRIC**



**TROUSER FRONT (middle section)**

**CUT 2 IN FABRIC**

**TROUSER BACK (top section)**  
CUT 2 IN FABRIC







**TROUSER FRONT (bottom section)**

**CUT 2 IN FABRIC**



**TROUSER BACK (middle section)**

**CUT 2 IN FABRIC**

**TROUSER BACK (bottom section)**

**CUT 2 IN FABRIC**