



## Sexy Dress Pattern

This Valentine's Day, we have something special for you --something sweet or something racy-- with a free sexy dress pattern and tutorial. This dress comes with a warning! Be careful. You may struggle to keep your lover's hands off you when wearing this..

This is an intermediate level project. It will take some time to make, but once it's done, you'll be happy to spend time in it! It is comfortable, but sexy and is a very flattering design. I have designed it on a bias and simplified the construction as much as possible. I have made it especially for the curvy girl in mind. The smallest size will accommodate a bust and hips between 43" and 45". I have not used fusible interfacing because I did not want any more support, and my fabric did not need it. You are welcome to use fusible interfacing if your fabric allows it.

If you have something sweet in mind, I recommend the use of a very soft cotton voile or silk chiffon. If racy is what you want, then try to find the same fabric I am using. It is a satin/silk, black crepe or lace. Other fabrics you can use: Satin, satin back crepe, Charmeuse Satin, silk damask. I'll give you a few good suggestions from Fabric.com below.

This pattern and tutorial are completely free to you. The design and pattern are entirely original and, as you can imagine, has taken some time to put together. I really hope that you enjoy it and that it adds

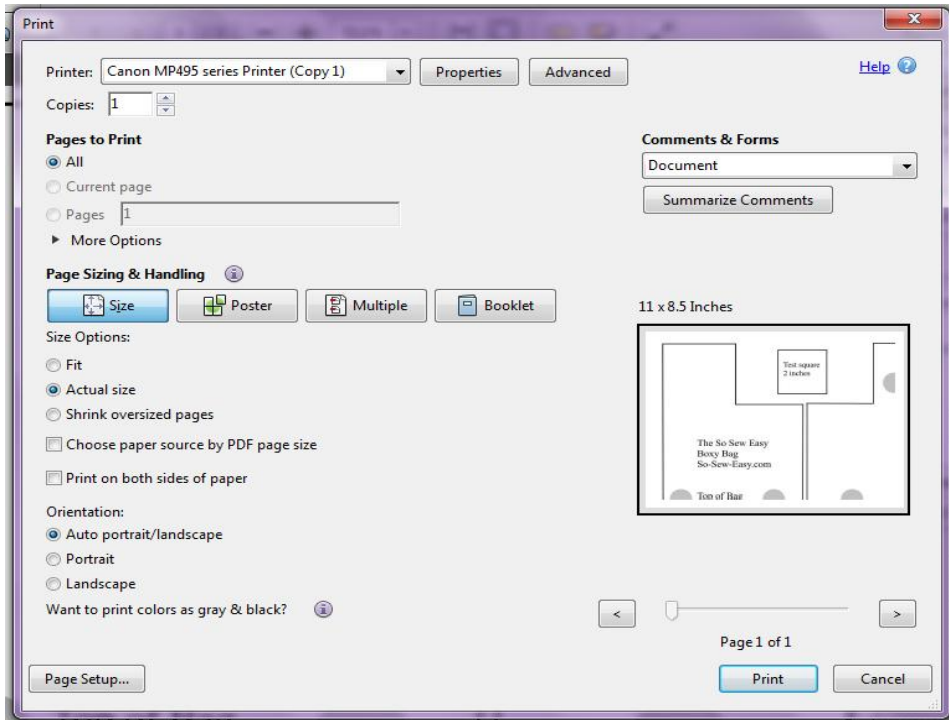
some spice to your Valentine's Day!

**You can read more about this pattern over at So Sew Easy [HERE](http://so-sew-easy.com).**

Find more great sewing patterns at So Sew Easy – <http://so-sew-easy.com>



## To print your PDF pattern



Your pattern pieces come at the end of these instructions. For accurate printing, please make sure you are using the latest version of Adobe Reader. You can [download the latest version here](#) if you need to.

Select File → Print and the print dialogue box opens. Under Page Sizing and Handling, select ACTUAL SIZE . Check the preview in the right hand side illustration. Select the page numbers you want to print. You can print the whole document, or just the pattern pieces.

On the edge of the top left page is a box you can use to test your printing. This box should measure 2 inches square. If yours is wildly different you will need to check your printer options to make sure the pages are not being resized.

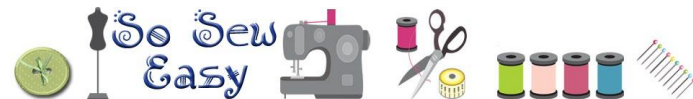
Use the grey guides on the overlap of the sheets to match up the pattern pieces, folding under or cutting off any overlaps, tape together and cut out your pattern pieces.

## Help printing and assembling your pattern

You can find helpful tutorials on how to download, print and assemble PDF sewing patterns here:

[How to download and print a PDF sewing pattern](#)

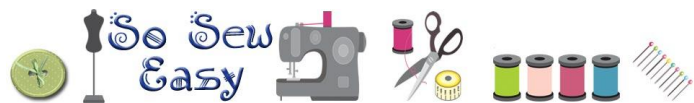
[How to print and assemble a PDF sewing pattern](#)



Find more great sewing patterns at So Sew Easy – <http://so-sew-easy.com>

## Materials

- 3 yards of fabric, more if you are matching the print
- [fusible interfacing](#) (optional)
- thread to match the fabric
- [elastic lace](#) for decoration; 23 1/2"
- a [loop turner](#)



Find more great sewing patterns at So Sew Easy – <http://so-sew-easy.com>

Thank you for downloading this pattern and tutorial. I hope you enjoyed making this project and remember that I love to see what you made so do upload your completed projects to the pattern page on Craftsy.

**Keep up with all the latest news and sewing projects at [So Sew Easy](#).**

We also have a really great sewing chat group where you can ask questions, share your completed projects, and get 24 hr sewing inspiration. It's not just for So Sew Easy projects – you can chat about all sewing there, whether a newbie just starting out, or an advanced and experienced sewer, there's something for everyone in the sewing chat group. Join us here.

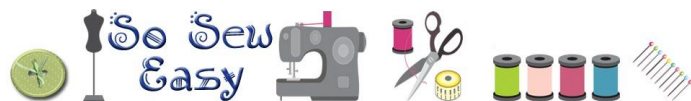
**[SEWING CHAT GROUP](#)**

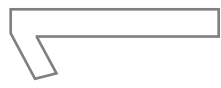
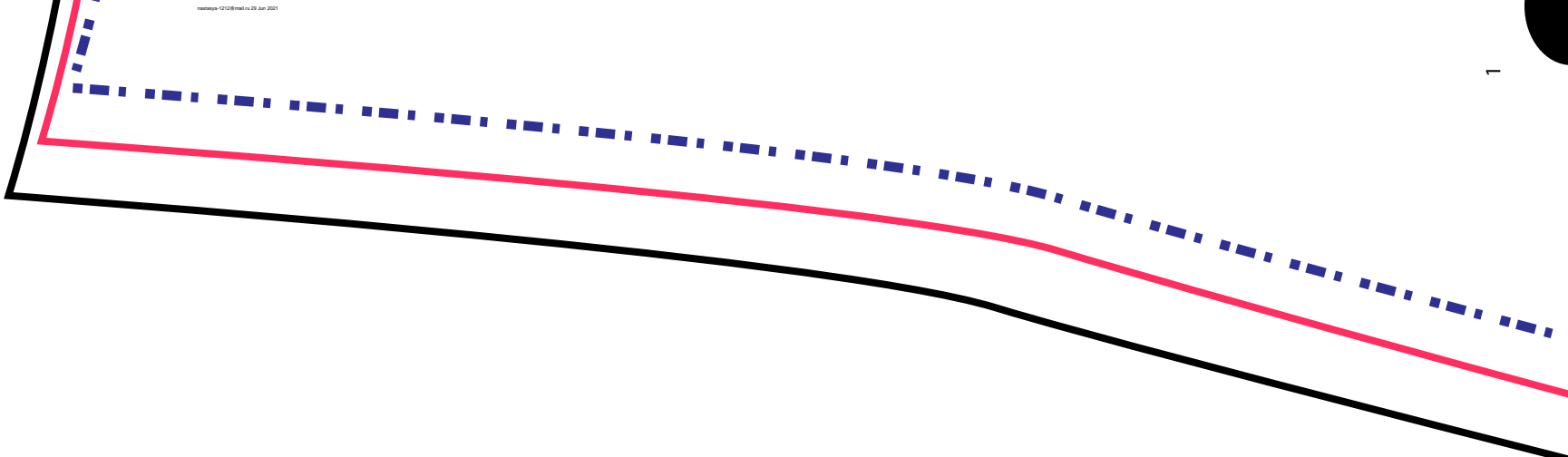
**For the latest list of both free and paid patterns available, pop on over to [my designer page at Craftsy](#).**

**This pattern graphic, the photos and the instructions are copyright So Sew Easy Pte Ltd and protected by law. All rights reserved. Please do not copy, publish, sell, redistribute or alter them in any way. Please don't print and give to your friends, or send it to anyone by email. Please do not rebrand this work as your own and sell or give it away, even if altered. This is intended for your personal use. If you would like to recommend these instructions, please pass on the original download link at So-Sew-Easy.com. Thank you for your understanding.**

**Usage – you ARE allowed to use this pattern to make things to sell on a small handmade basis, such as for craft fairs and for your Etsy shop. However it may not be used for larger scale commercial purposes without a commercial license.**

*Find more great sewing patterns at So Sew Easy – <http://so-sew-easy.com>*







sample 1212@mail.ru 29. Apr. 2021

2

Seam allowance 5/8"

# So-Sew-Easy.com

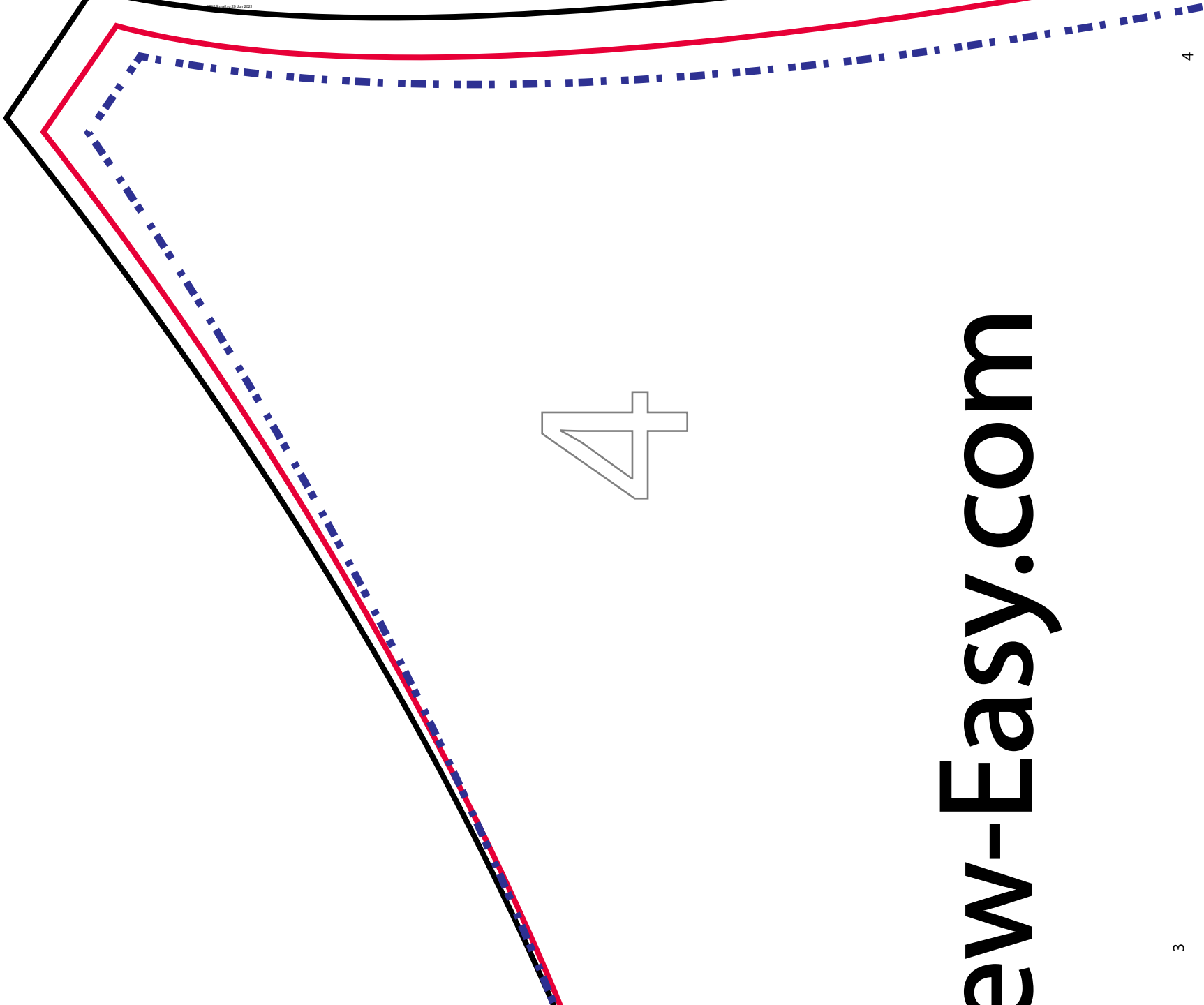


3

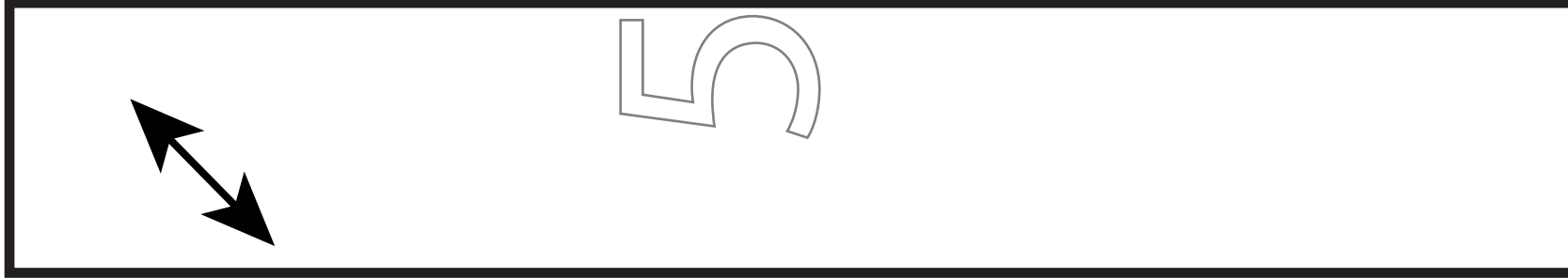
So-Se

ew-Easy.com

4

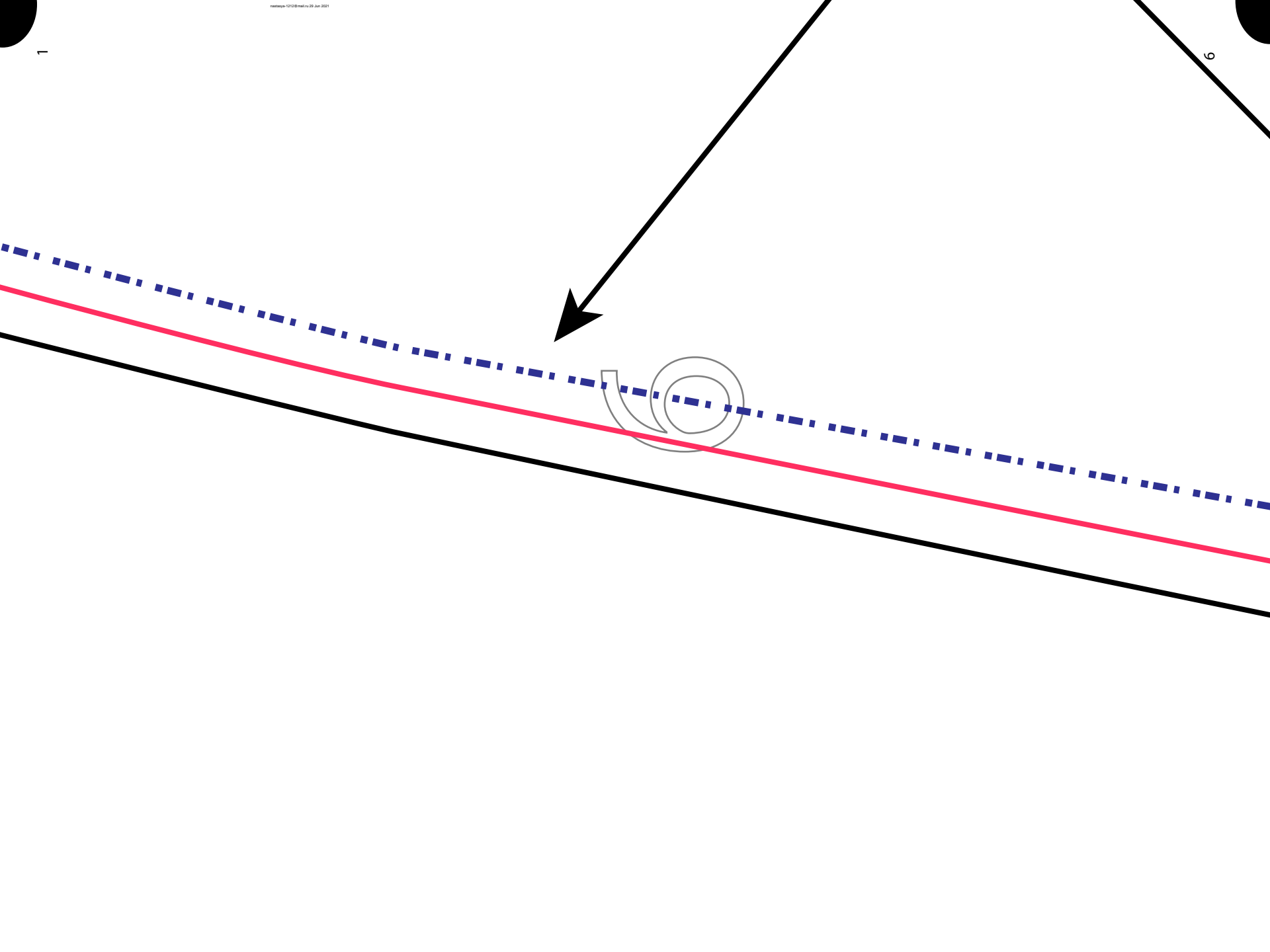






1

6



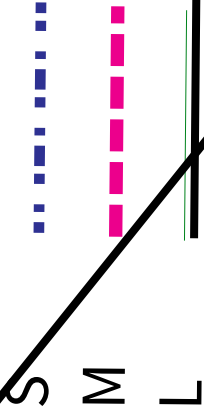
# Front

Cut 1 on fold or

retrace the pattern and cut



Size Key

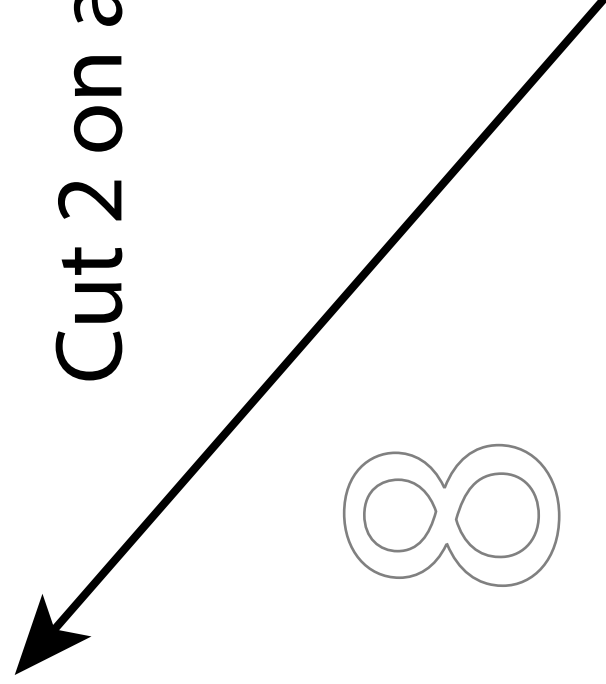




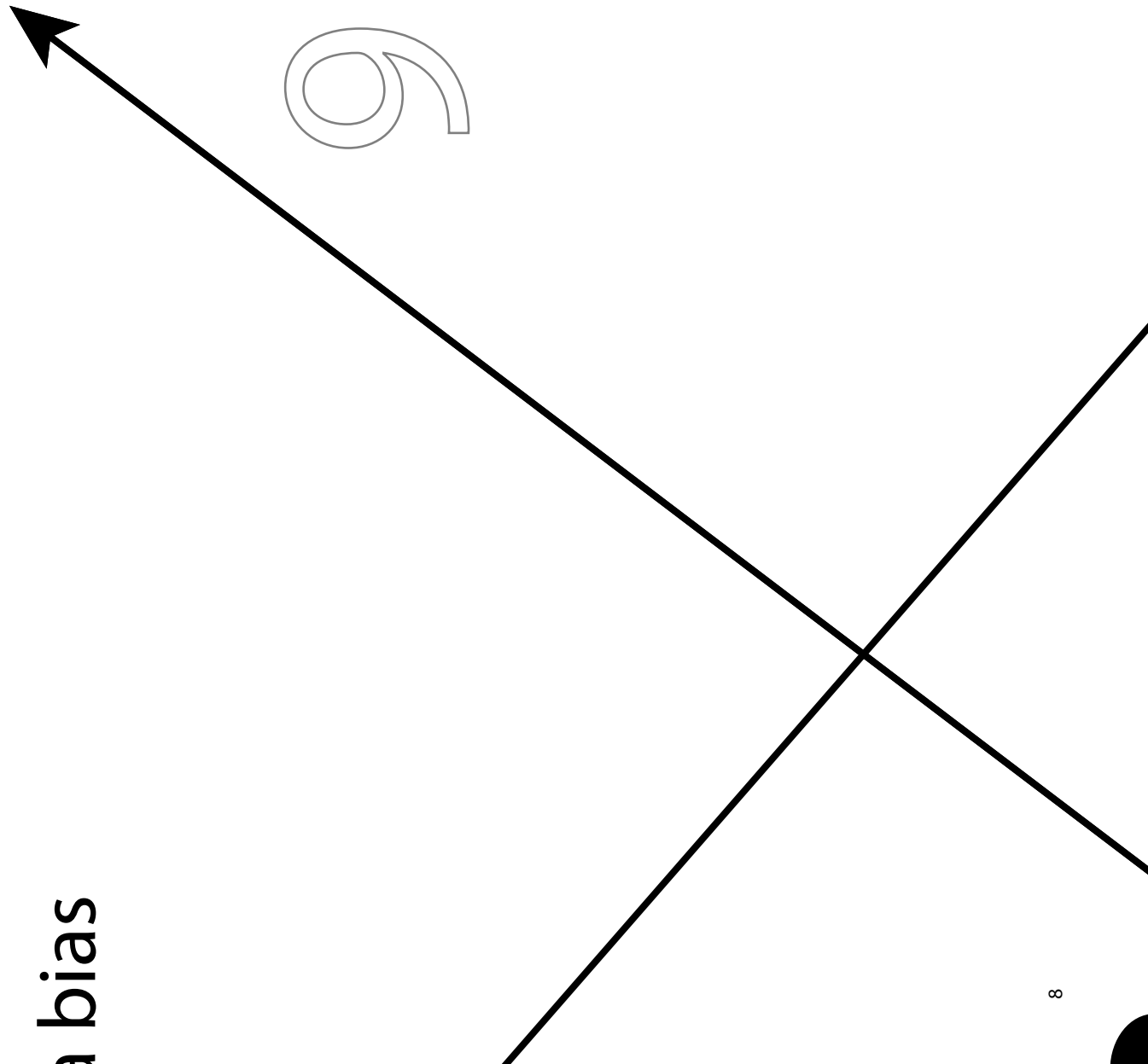
one

Back

Cut 2 on a



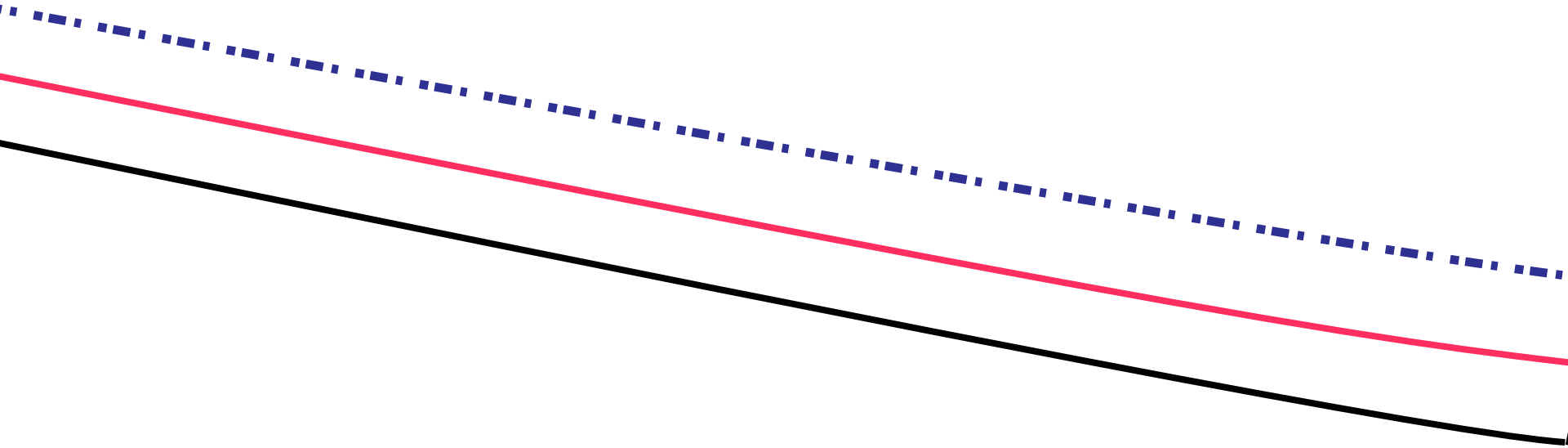
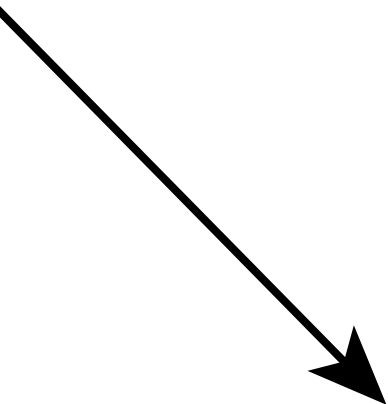
a bias



9

Cut 2

10

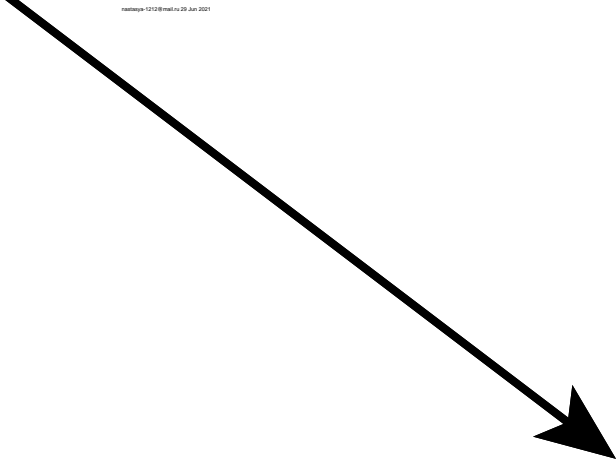


Seam allowance 5/8"

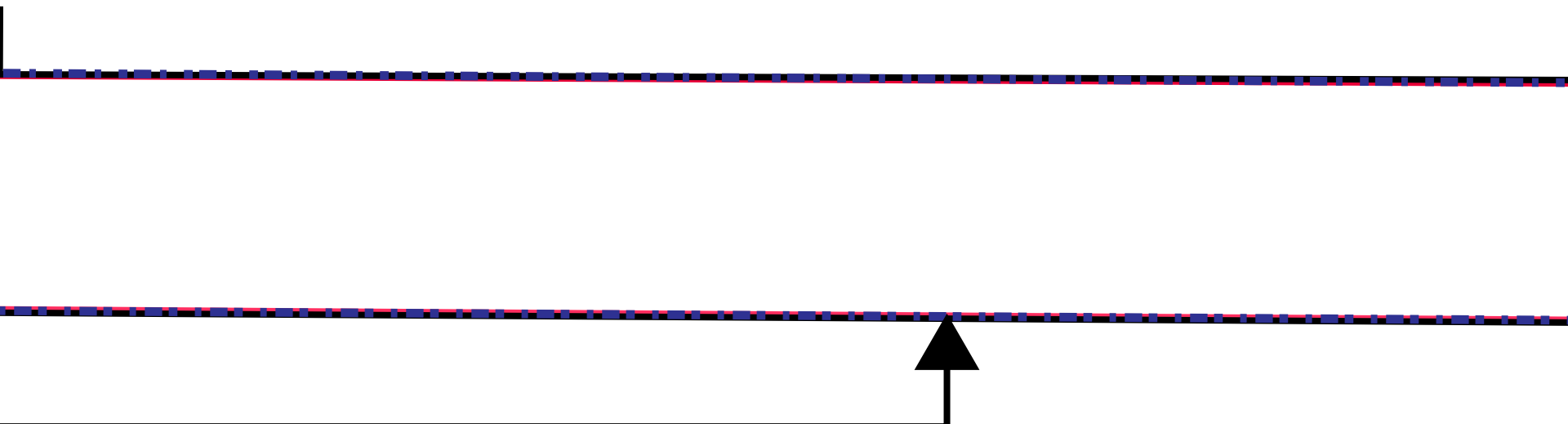


12





3  
1



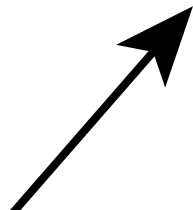
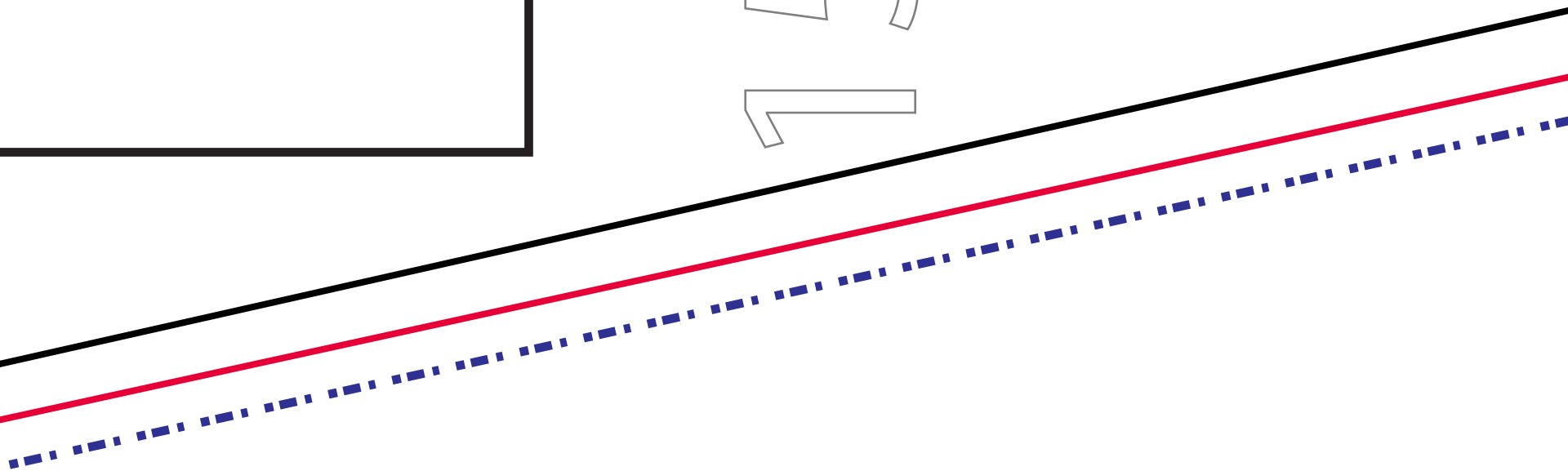
Seam allowance 5/8"

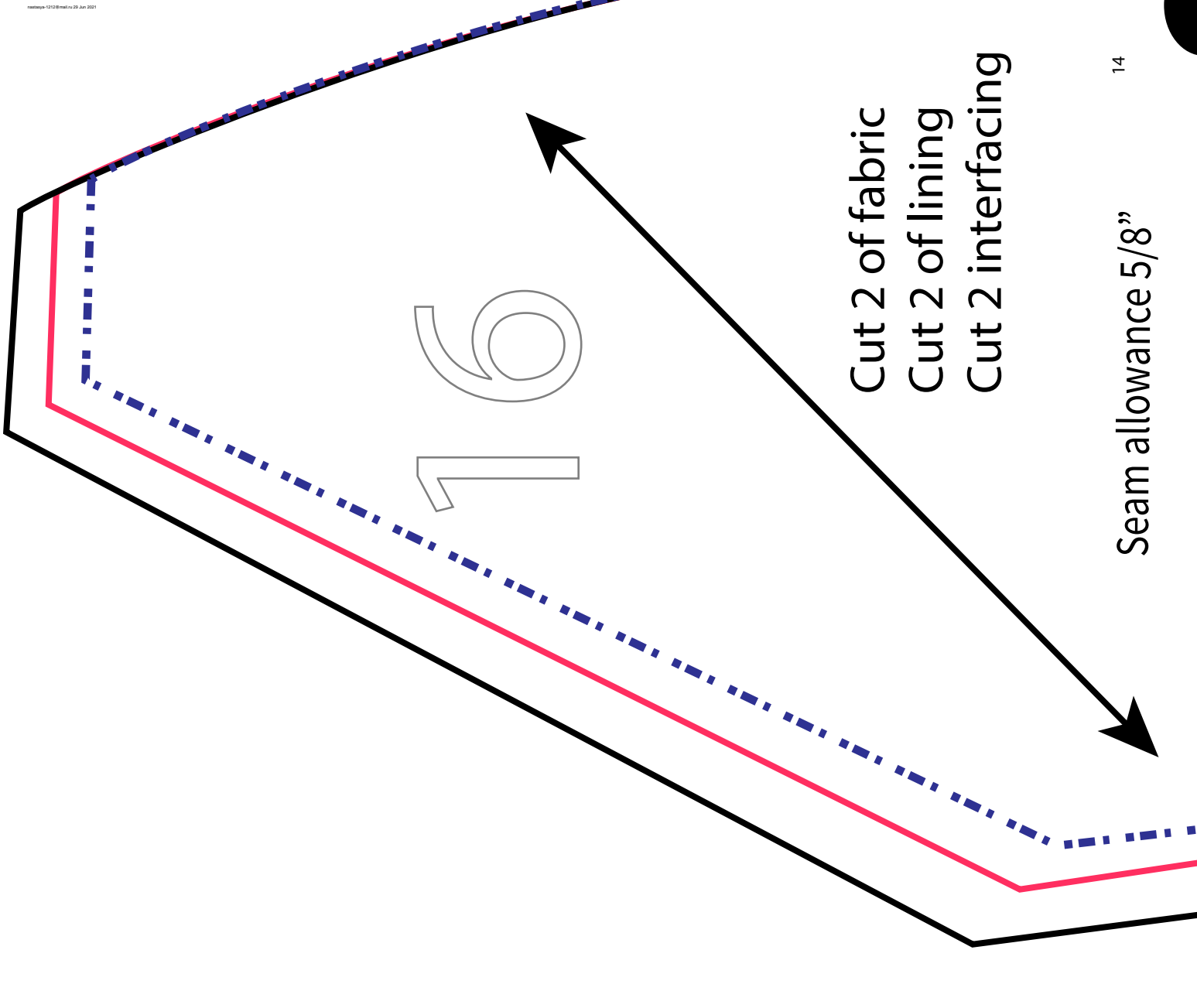
Cut two on bias

14



15

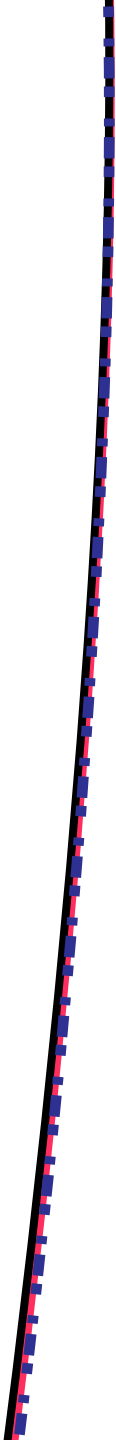




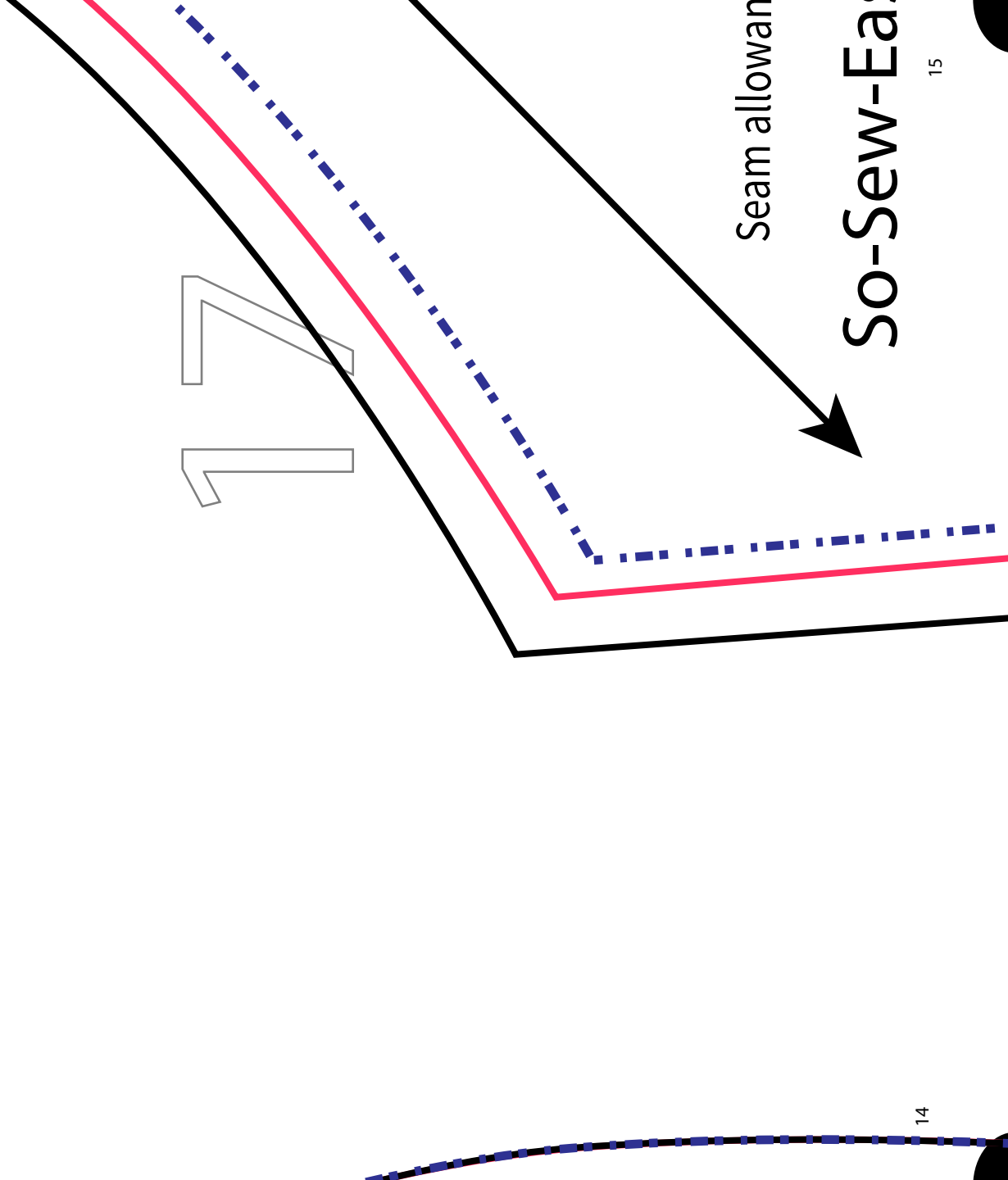
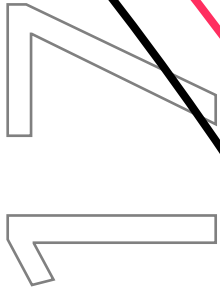
16

Cut 2 of fabric  
 Cut 2 of lining  
 Cut 2 interfacing

Seam allowance 5/8"

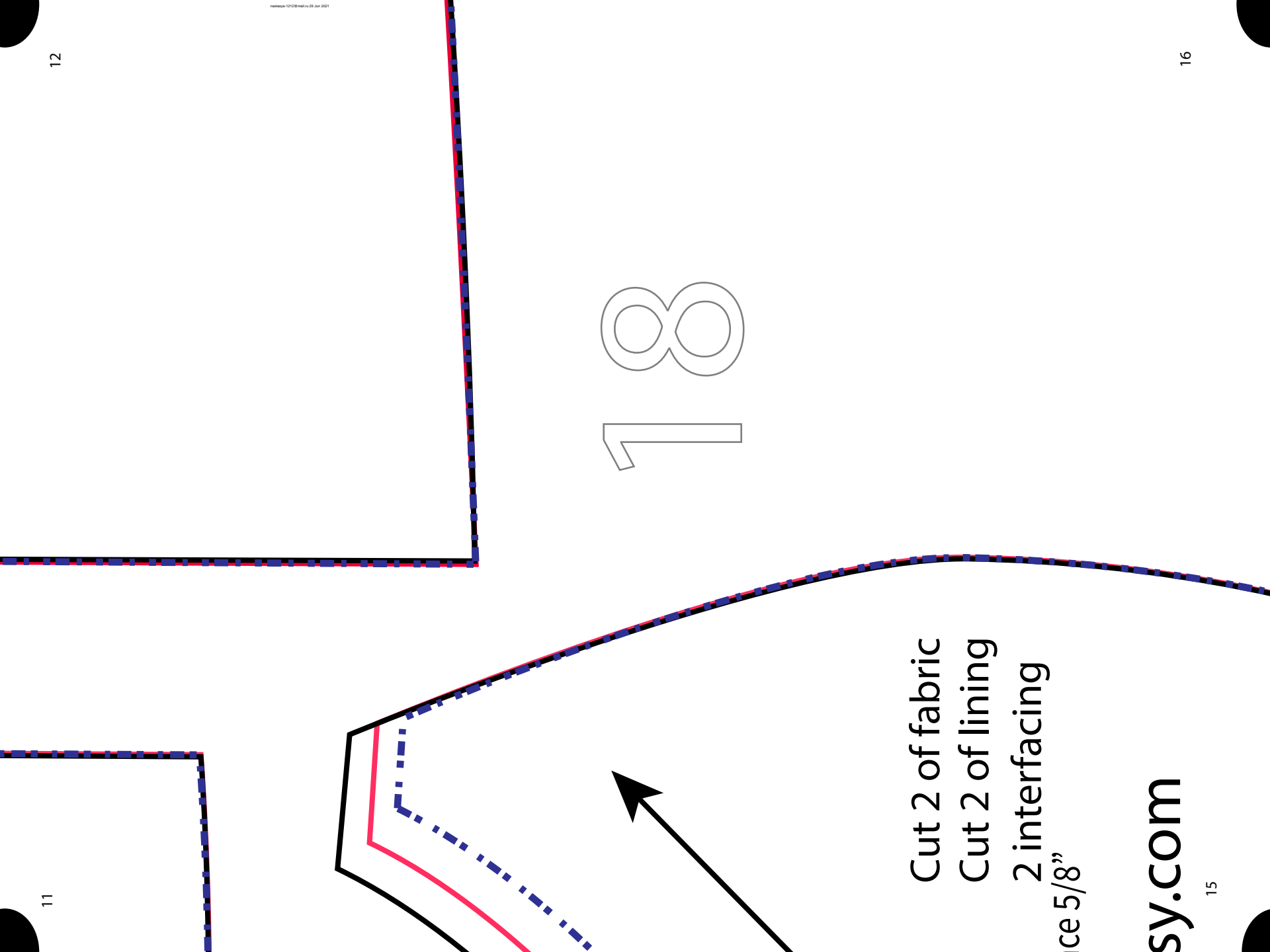


© 2014 Sewing.com



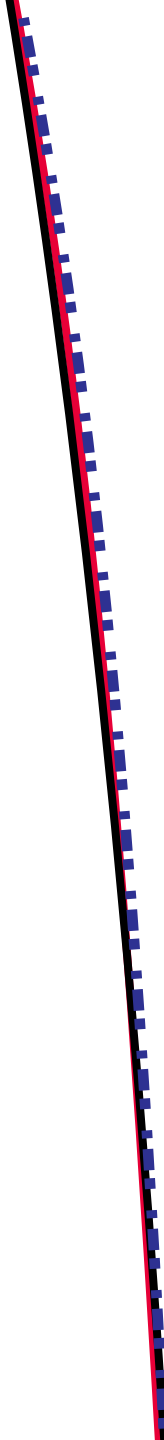
Seam allowan

So-Sew-Ea

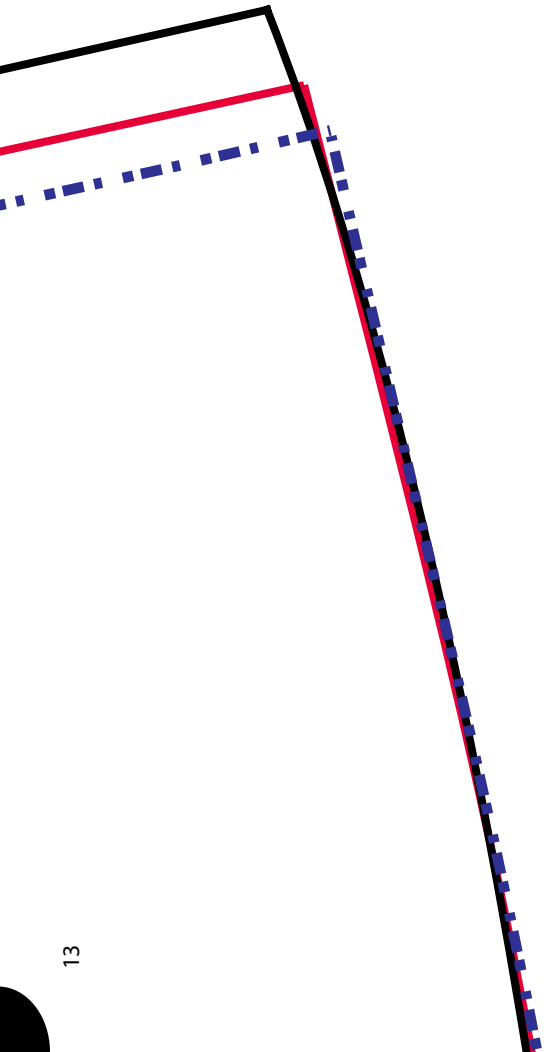


Cut 2 of fabric  
 Cut 2 of lining  
 2 interfacing  
 ce 5/8"

18

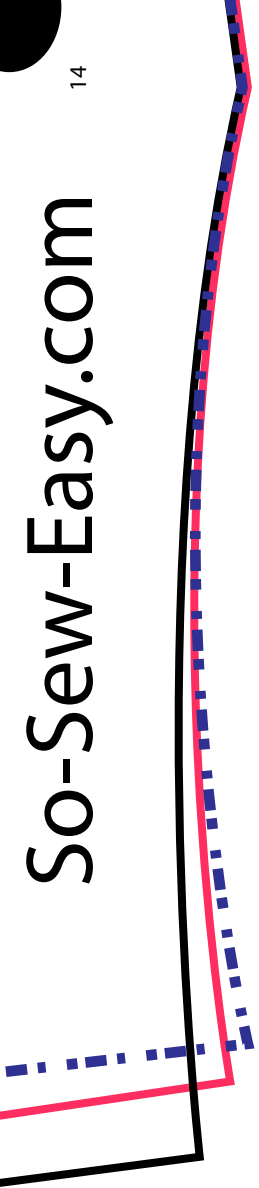


19



20



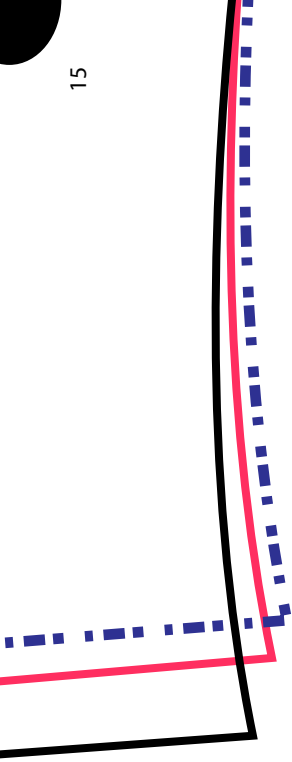


21

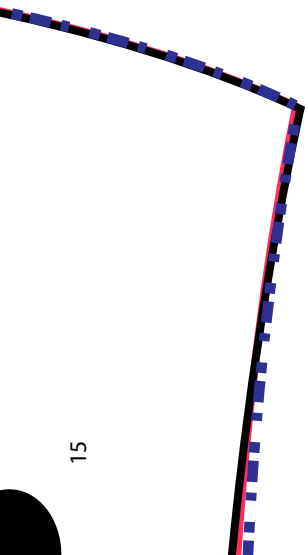
14



15



22



23