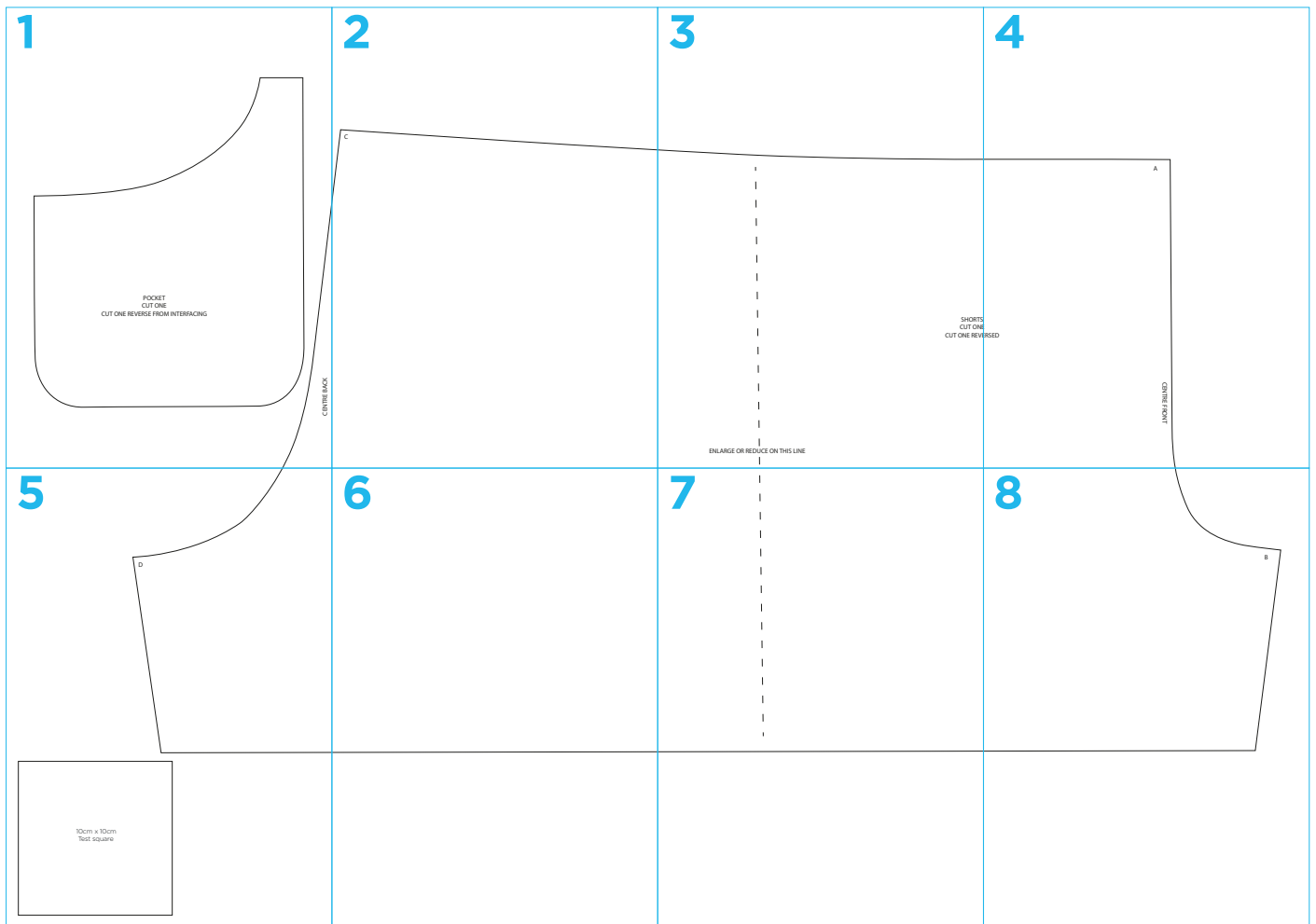
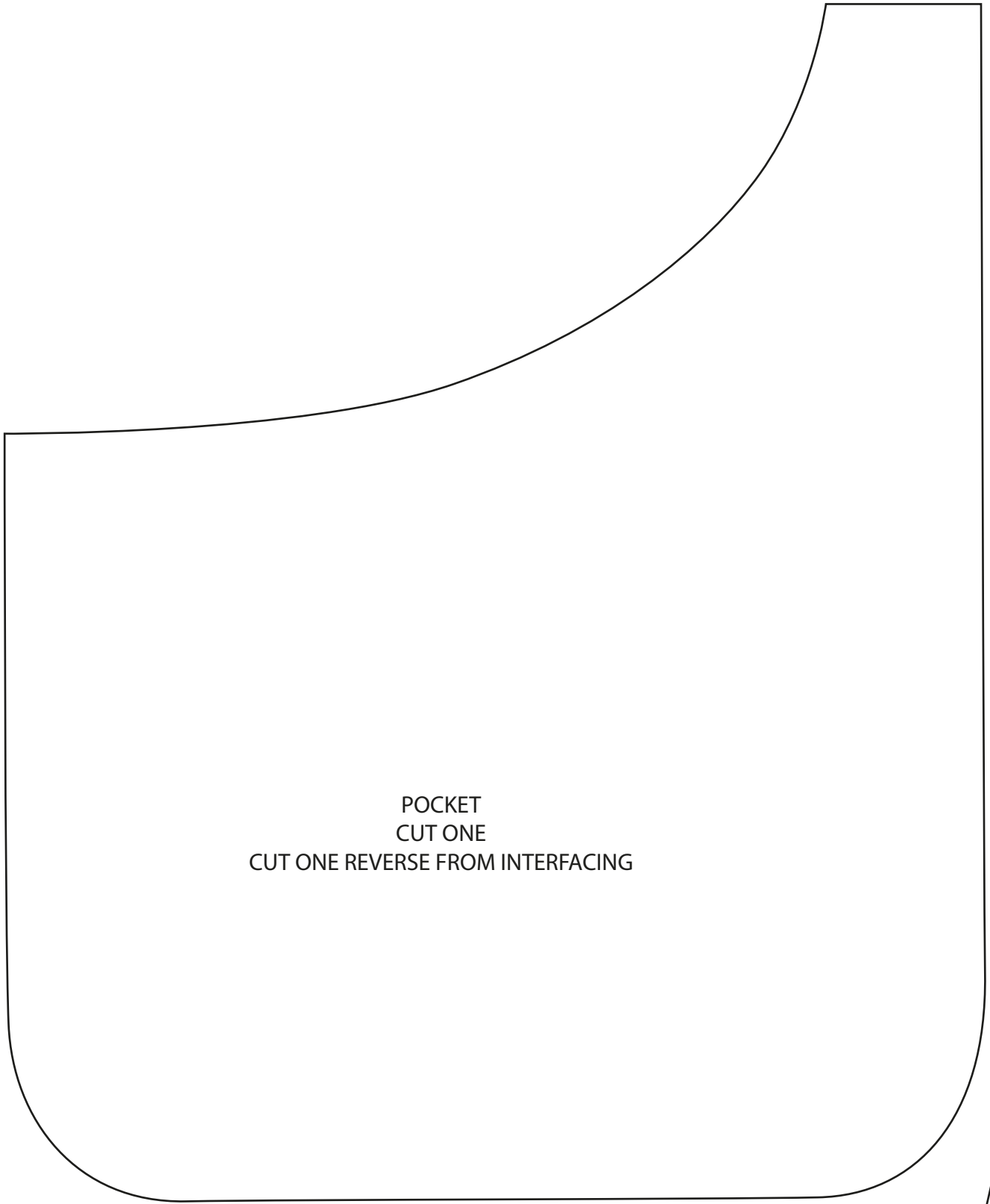


**CUTTING GUIDE**

Our pattern will make PJ shorts with a hip measurement of 102cm. The waist measurement is determined by the tightness of the elastic. For other sizes, simply add or subtract along the marked line of the pattern. All seam allowances are 1cm.



1



POCKET  
CUT ONE  
CUT ONE REVERSE FROM INTERFACING

CENTRE BACK

2

c

A diagram showing a right-angled corner. A vertical line segment on the left meets a horizontal line segment at the top. The vertex of the corner is labeled with a small lowercase letter 'c'.

3

SHORTS  
CUT ONE  
CUT ONE REVER

ENLARGE OR REDUCE ON THIS LINE

4

A

ERSED


CENTRE FRONT

# 5

D



10cm x 10cm  
Test square



6





8



B