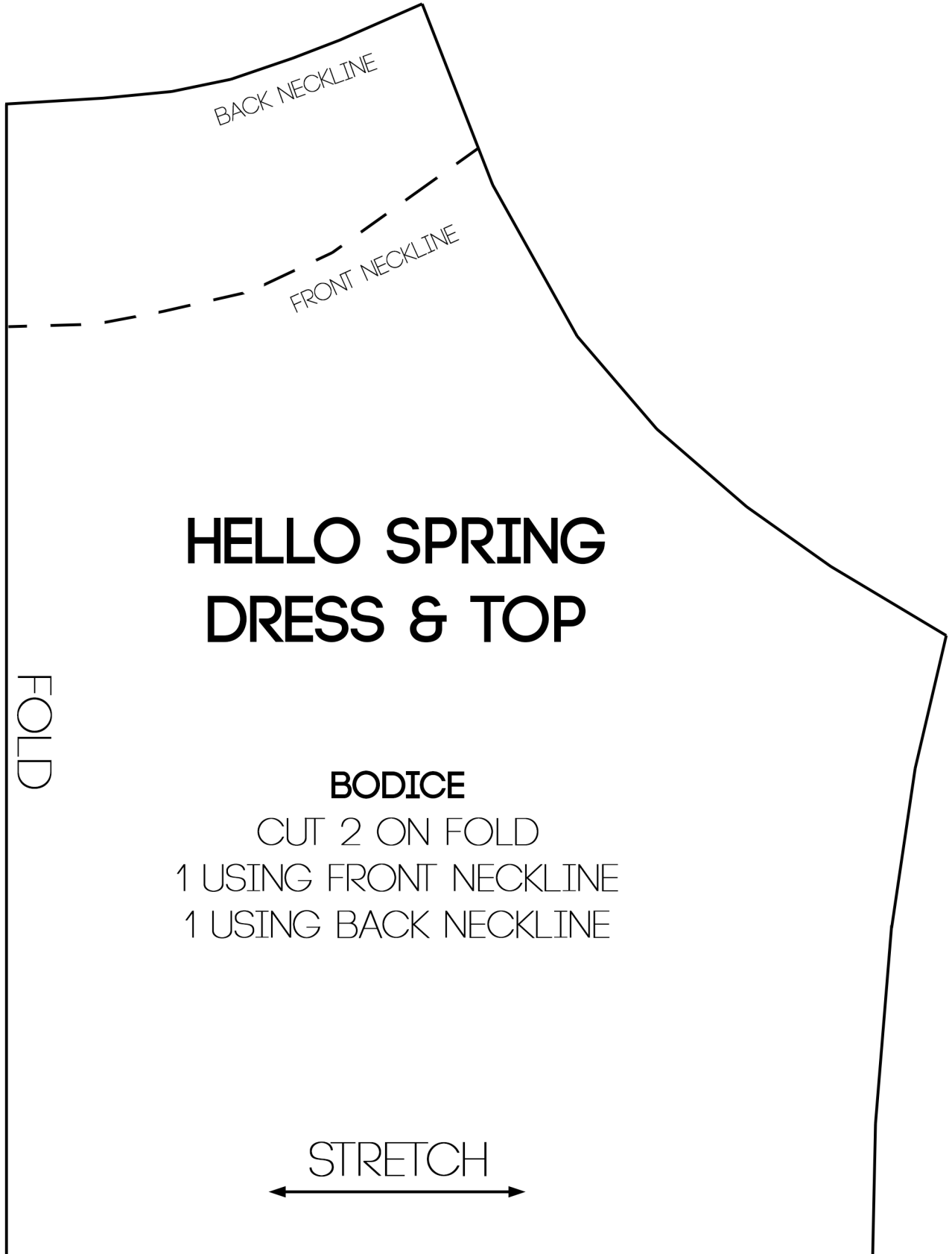


1 IN X 1 IN



# HELLO SPRING DRESS & TOP

FOLD

## BODICE

CUT 2 ON FOLD  
1 USING FRONT NECKLINE  
1 USING BACK NECKLINE

STRETCH



**ALSO CUT:**

NECK BINDING

1.5 INCHES TALL X 22 INCHES WIDE  
(must be knit fabric; stretch goes along width)

**AND:**

2 SKIRT PIECES

34 INCHES WIDE X 16 INCHES TALL

**--OR--**

2 PEPLUM PIECES

34 INCHES WIDE X 8 INCHES TALL  
(skirt or peplum can be made from woven fabric if desired)

>it's always  
*autumn*

