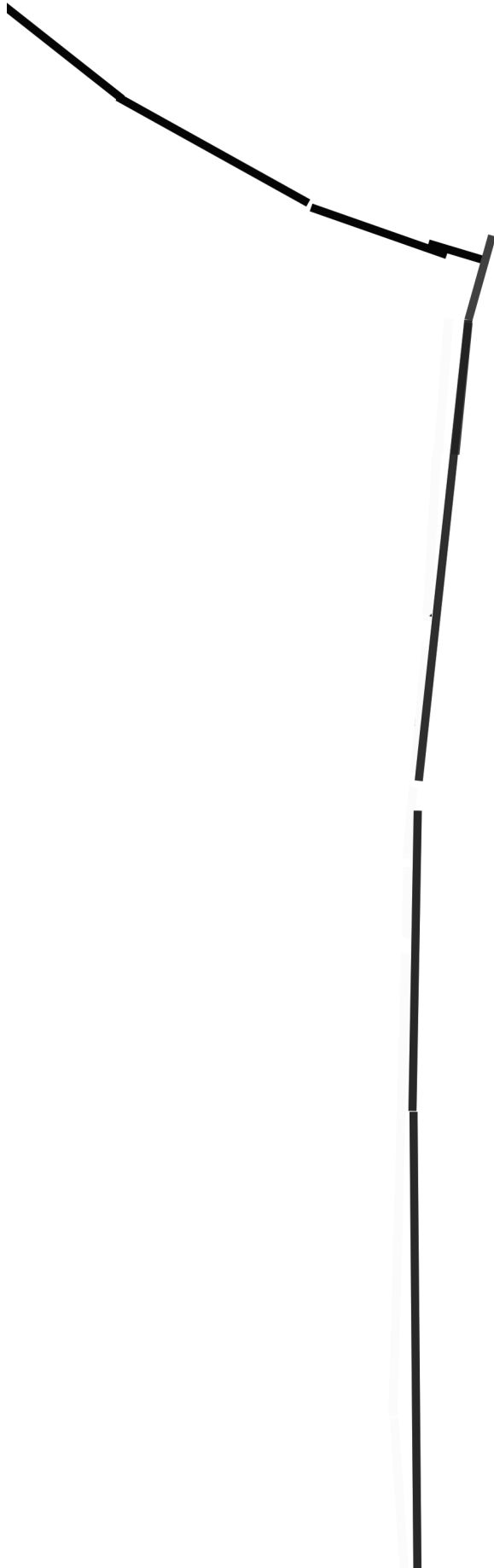


cut 1 front and 1 back on fold

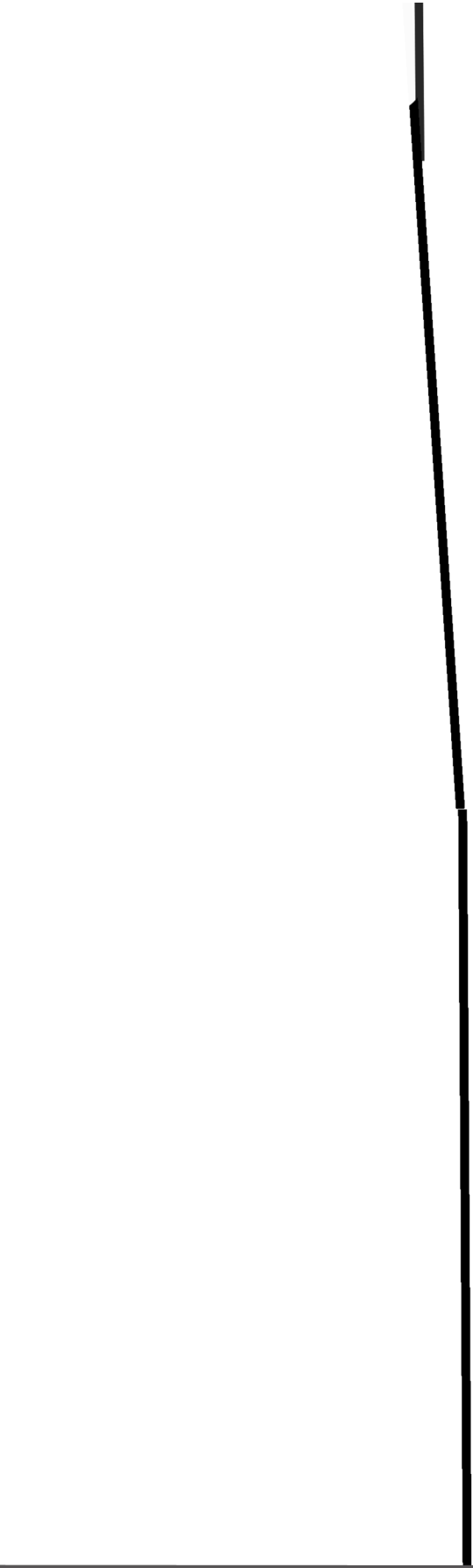
**THE EASY TEE - size L
RAGLAN SLEEVE**

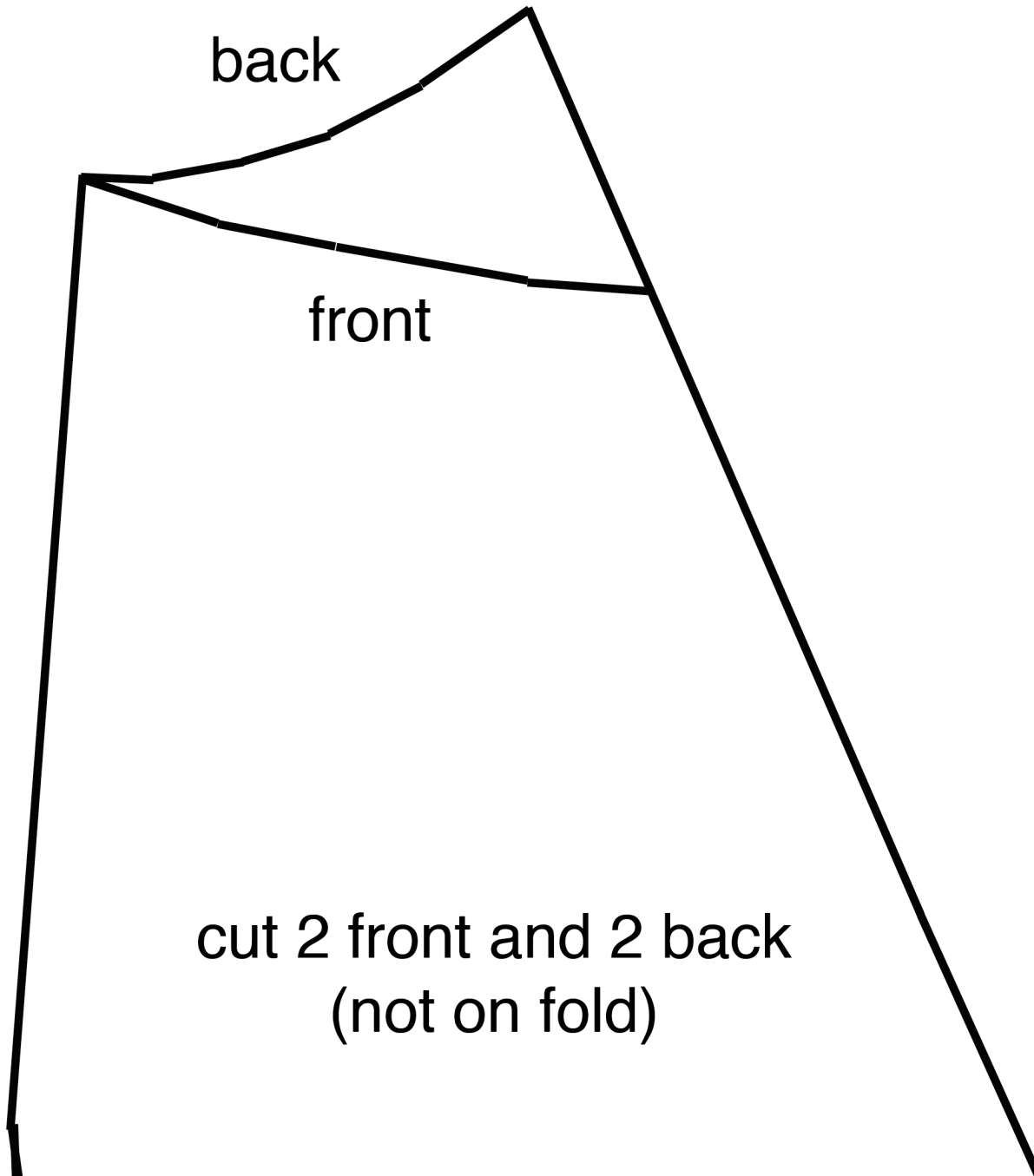
itsalwaysautumn.com

FOLD



length to turn up and hem





back

front

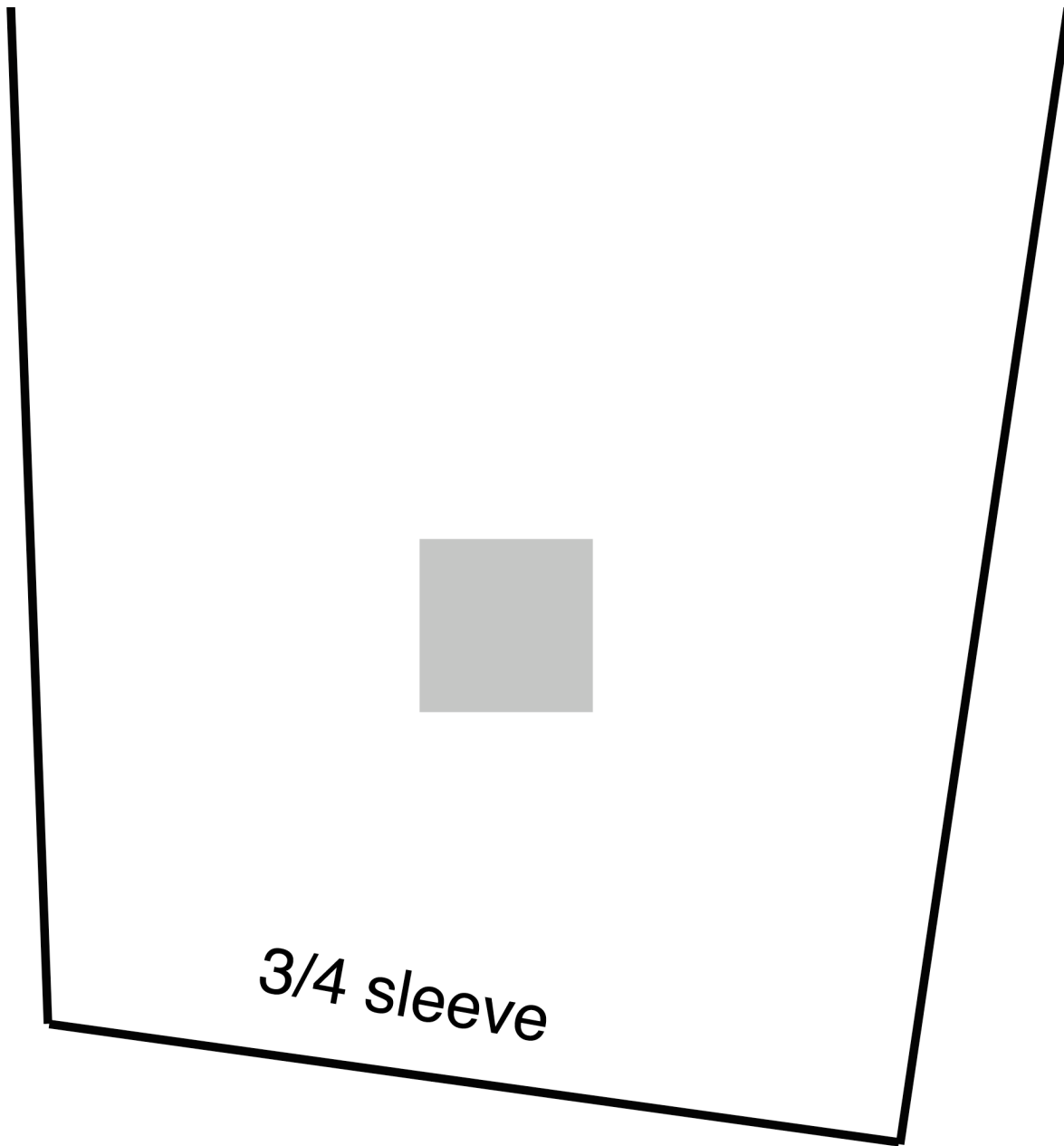
cut 2 front and 2 back
(not on fold)

cap sleeve

short sleeve

THE EASY TEE - size L
RAGLAN SLEEVE

itsalwaysautumn.com



3/4 sleeve